

Product datasheet for **AP23509PU-N**

DCAMKL2 (DCLK2) (C-term) Rabbit Polyclonal Antibody

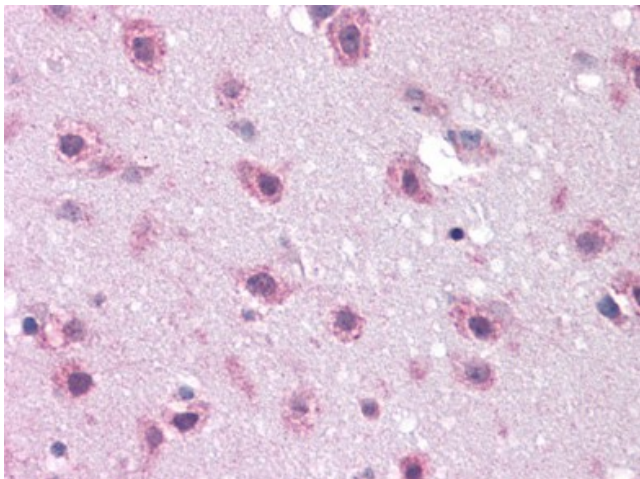
Product data:

Product Type:	Primary Antibodies
Applications:	ELISA, IHC, WB
Recommended Dilution:	ELISA. Immunohistochemistry on Paraffin Sections: 5 µg/ml. Western Blot: 1 - 2 µg/ml.
Reactivity:	Human, Mouse, Rat
Host:	Rabbit
Clonality:	Polyclonal
Immunogen:	DCLK2 antibody was raised against synthetic peptide - KLH conjugated
Specificity:	This antibody reacts to the C-term of Doublecortin-Like Kinase 2 (DCLK2) protein.
Formulation:	PBS containing 0.02% sodium azide as preservative State: Liquid purified Ig fraction
Concentration:	lot specific
Purification:	Immunoaffinity Chromatography
Conjugation:	Unconjugated
Storage:	Store the antibody undiluted at 2-8°C.
Stability:	Shelf life: one year from despatch.
Gene Name:	doublecortin like kinase 2
Database Link:	Entrez Gene 70762 Mouse Entrez Gene 310698 Rat Entrez Gene 166614 Human Q8N568
Background:	This gene is similar to the DCAMKL subfamily of serine/threonine kinases.
Synonyms:	DCLK2, DCAMKL2, DCDC3B, DCK2, CLICK2, DKFZp7611032
Protein Families:	Druggable Genome, Protein Kinase

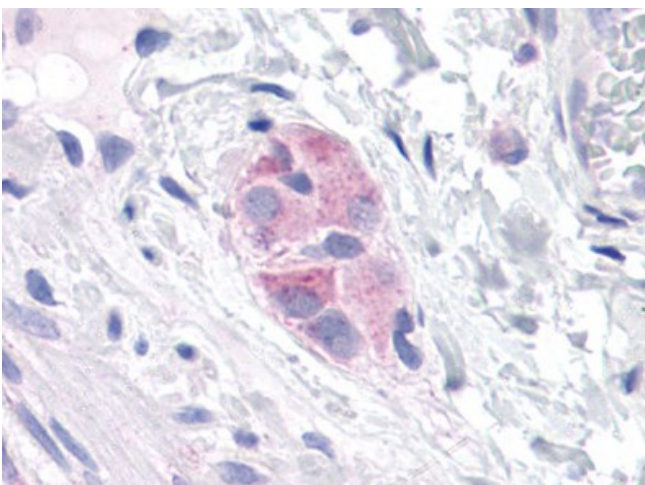


[View online »](#)

Product images:



Human Brain, Cortex: Formalin-Fixed, Paraffin-Embedded (FFPE)



Human Colon, Submucosal Plexus: Formalin-Fixed, Paraffin-Embedded (FFPE)