

Product datasheet for **AP23507PU-N**

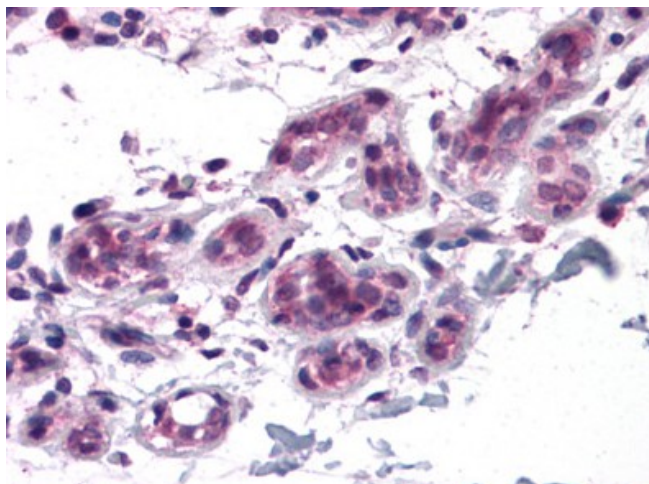
BCAS3 (N-term) Rabbit Polyclonal Antibody

Product data:

Product Type:	Primary Antibodies
Applications:	ELISA, IHC, WB
Recommended Dilution:	ELISA. Immunohistochemistry on Paraffin Sections: 5 µg/ml. Western Blot: 0.5 - 1 µg/ml.
Reactivity:	Human, Mouse, Rat
Host:	Rabbit
Clonality:	Polyclonal
Immunogen:	BCAS3 antibody was raised against synthetic peptide - KLH conjugated
Specificity:	This antibody reacts to the N-term of Breast Carcinoma Amplified Sequence 3 (BCAS3) protein.
Formulation:	PBS containing 0.02% sodium azide as preservative State: Liquid purified Ig fraction
Concentration:	lot specific
Purification:	Immunoaffinity Chromatography
Conjugation:	Unconjugated
Storage:	Store the antibody undiluted at 2-8°C.
Stability:	Shelf life: one year from despatch.
Gene Name:	breast carcinoma amplified sequence 3
Database Link:	Entrez Gene 192197 Mouse Entrez Gene 363662 Rat Entrez Gene 54828 Human Q9H6U6
Synonyms:	Maab1 protein



[View online »](#)

Product images:

Human Breast: Formalin-Fixed, Paraffin-Embedded (FFPE)