

Product datasheet for **AP23506PU-N**

BCAS2 (C-term) Rabbit Polyclonal Antibody

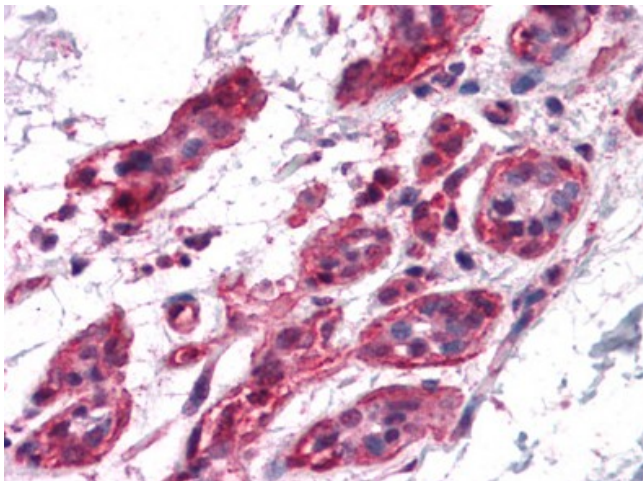
Product data:

Product Type:	Primary Antibodies
Applications:	ELISA, IHC, WB
Recommended Dilution:	ELISA. Immunohistochemistry on Paraffin Sections: 5 µg/ml. Western Blot: 0.5 - 1 µg/ml.
Reactivity:	Human, Mouse, Rat
Host:	Rabbit
Clonality:	Polyclonal
Immunogen:	BCAS2 antibody was raised against synthetic peptide - KLH conjugated
Specificity:	This antibody reacts to the c-term of Breast Carcinoma Amplified Sequence 2 (BCAS2) protein.
Formulation:	PBS containing 0.02% sodium azide as preservative State: Liquid purified Ig fraction
Concentration:	lot specific
Purification:	Immunoaffinity Chromatography
Conjugation:	Unconjugated
Storage:	Store the antibody undiluted at 2-8°C.
Stability:	Shelf life: one year from despatch.
Gene Name:	breast carcinoma amplified sequence 2
Database Link:	Entrez Gene 68183 Mouse Entrez Gene 295334 Rat Entrez Gene 10286 Human O75934
Synonyms:	SPF27
Protein Pathways:	Spliceosome

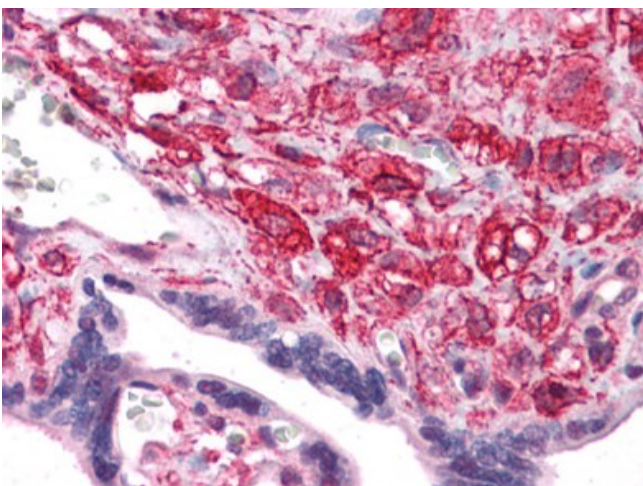


[View online »](#)

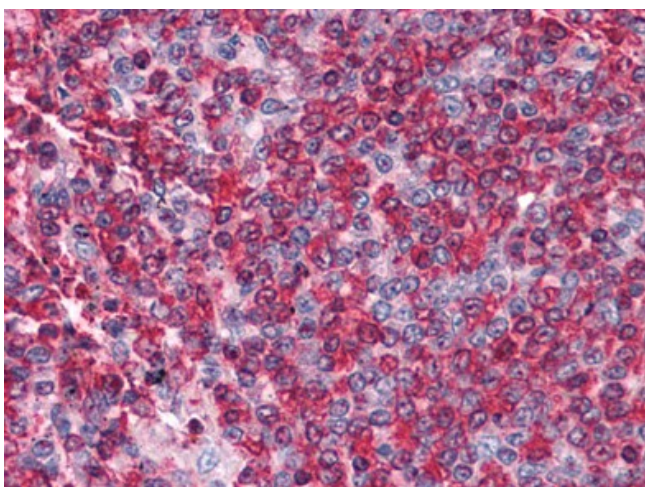
Product images:



Human Breast: Formalin-Fixed, Paraffin-Embedded (FFPE)



Human Placenta: Formalin-Fixed, Paraffin-Embedded (FFPE)



Human Spleen: Formalin-Fixed, Paraffin-Embedded (FFPE)