

## Product datasheet for **AP23505PU-N**

### **NABC1 (BCAS1) (C-term) Rabbit Polyclonal Antibody**

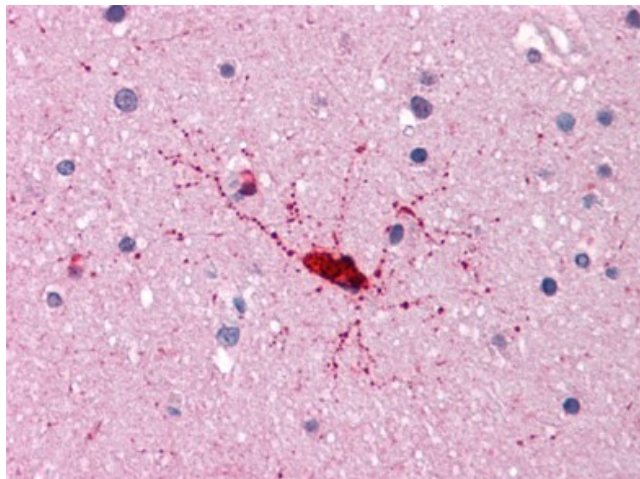
#### **Product data:**

Product Type:	Primary Antibodies
Applications:	ELISA, IHC, WB
Recommended Dilution:	<b>ELISA.</b> <b>Immunohistochemistry on Paraffin Sections:</b> 5 µg/ml. <b>Western Blot:</b> 1 - 2 µg/ml.
Reactivity:	Human
Host:	Rabbit
Clonality:	Polyclonal
Immunogen:	BCAS1 antibody was raised against synthetic peptide - KLH conjugated
Specificity:	This antibody reacts to the c-term of Breast Carcinoma Amplified Sequence 1 (BCAS1) protein.
Formulation:	PBS containing 0.02% sodium azide as preservative State: Liquid purified Ig fraction
Concentration:	lot specific
Purification:	Immunoaffinity Chromatography
Conjugation:	Unconjugated
Storage:	Store the antibody undiluted at 2-8°C.
Stability:	Shelf life: one year from despatch.
Gene Name:	breast carcinoma amplified sequence 1
Database Link:	<a href="#">Entrez Gene 8537 Human</a> <a href="#">O75363</a>
Synonyms:	AIBC1

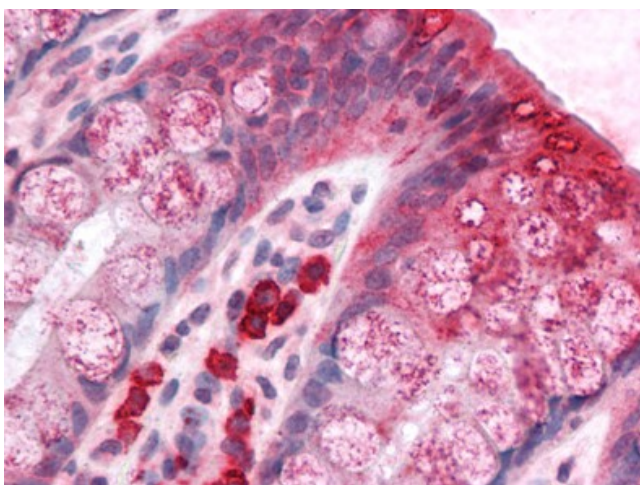


[View online »](#)

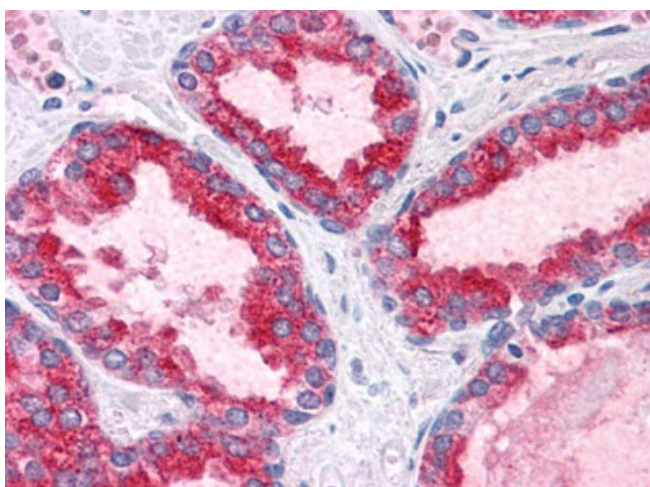
**Product images:**



Human Brain, Cortex: Formalin-Fixed, Paraffin-Embedded (FFPE)



Human Colon: Formalin-Fixed, Paraffin-Embedded (FFPE)



Human Prostate: Formalin-Fixed, Paraffin-Embedded (FFPE)