

## Product datasheet for **AP23503PU-N**

### **BFAR (C-term) Rabbit Polyclonal Antibody**

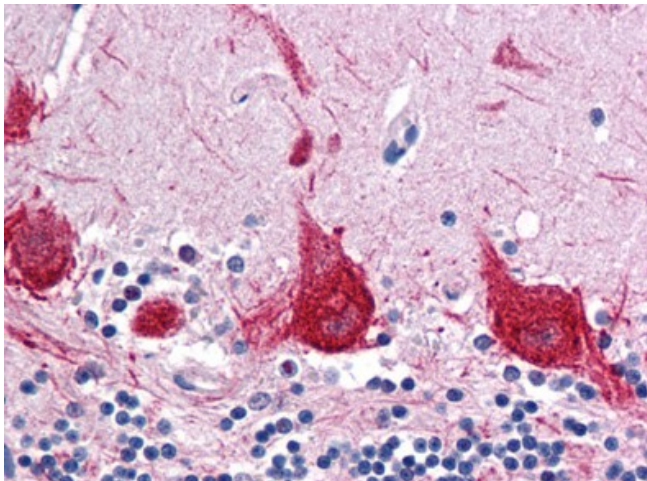
#### **Product data:**

Product Type:	Primary Antibodies
Applications:	ELISA, IHC, WB
Recommended Dilution:	<b>ELISA.</b> <b>Immunohistochemistry on Paraffin Sections:</b> 5 µg/ml. <b>Western Blot:</b> 1 - 2 µg/ml.
Reactivity:	Human, Mouse, Rat
Host:	Rabbit
Clonality:	Polyclonal
Immunogen:	BFAR antibody was raised against synthetic peptide - KLH conjugated
Specificity:	This antibody reacts to Bifunctional Apoptosis Regulator (BFAR).
Formulation:	PBS containing 0.02% sodium azide as preservative State: Liquid purified Ig fraction
Concentration:	lot specific
Purification:	Immunoaffinity Chromatography
Conjugation:	Unconjugated
Storage:	Store the antibody undiluted at 2-8°C.
Stability:	Shelf life: one year from despatch.
Gene Name:	bifunctional apoptosis regulator
Database Link:	<a href="#">Entrez Gene 67118 Mouse</a> <a href="#">Entrez Gene 304709 Rat</a> <a href="#">Entrez Gene 51283 Human Q9NZS9</a>
Synonyms:	BAR, RING finger protein 47
Protein Families:	Druggable Genome, Transmembrane



[View online »](#)

**Product images:**



Human Brain, Cerebellum: Formalin-Fixed, Paraffin-Embedded (FFPE)