

Product datasheet for **AP23502PU-N**

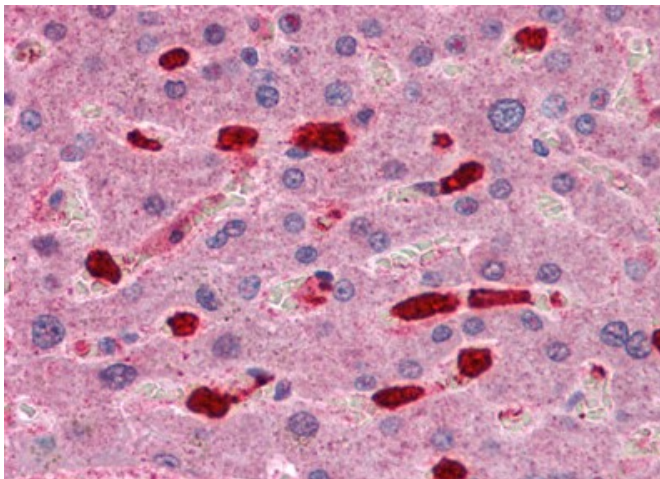
ARHGAP18 (C-term) Rabbit Polyclonal Antibody

Product data:

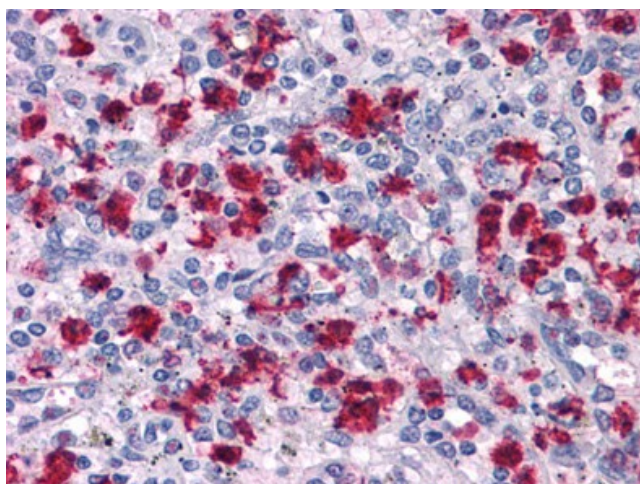
Product Type:	Primary Antibodies
Applications:	ELISA, IF, IHC, WB
Recommended Dilution:	ELISA. Immunocytochemistry. Immunohistochemistry on Paraffin Sections: 2.5 - 5 µg/ml. Western Blot: 1 - 2 µg/ml.
Reactivity:	Human, Mouse, Rat
Host:	Rabbit
Clonality:	Polyclonal
Immunogen:	ARHGAP18 antibody was raised against synthetic peptide - KLH conjugated
Specificity:	This antibody reacts to Rho GTPase Activating Protein 18 (ARHGAP18).
Formulation:	PBS containing 0.02% sodium azide as preservative State: Liquid purified Ig fraction
Concentration:	lot specific
Purification:	Immunoaffinity Chromatography
Conjugation:	Unconjugated
Storage:	Store the antibody undiluted at 2-8°C.
Stability:	Shelf life: one year from despatch.
Gene Name:	Rho GTPase activating protein 18
Database Link:	Entrez Gene 73910 Mouse Entrez Gene 293947 Rat Entrez Gene 93663 Human Q8N392
Synonyms:	MacGAP



[View online »](#)

Product images:

Human Liver: Formalin-Fixed, Paraffin-Embedded (FFPE)



Human Spleen: Formalin-Fixed, Paraffin-Embedded (FFPE)