

Product datasheet for **AP23500PU-N**

LXR alpha (NR1H3) (N-term) Rabbit Polyclonal Antibody

Product data:

Product Type:	Primary Antibodies
Applications:	ELISA, IHC, WB
Recommended Dilution:	ELISA. Immunohistochemistry on Paraffin Sections: 5 µg/ml. Western Blot: 1 - 2 µg/ml.
Reactivity:	Human, Mouse, Rat
Host:	Rabbit
Clonality:	Polyclonal
Immunogen:	NR1H3 antibody was raised against synthetic peptide - KLH conjugated
Specificity:	This antibody reacts to the N-term of Liver X Receptor Alpha (LXR Alpha/NR1H3).
Formulation:	PBS containing 0.02% sodium azide as preservative State: Liquid purified Ig fraction
Concentration:	lot specific
Purification:	Immunoaffinity Chromatography
Conjugation:	Unconjugated
Storage:	Store the antibody undiluted at 2-8°C.
Stability:	Shelf life: one year from despatch.
Gene Name:	nuclear receptor subfamily 1 group H member 3
Database Link:	Entrez Gene 22259 Mouse Entrez Gene 58852 Rat Entrez Gene 10062 Human Q13133



[View online »](#)

Background:

Liver X receptor alpha (LXR alpha), a NR1 Thyroid Hormone-Like Receptor, has been shown to affect the transport and catabolism of cholesterol as well as fatty acid metabolism. LXR alpha also appears to be an important insulin mediating factor in the regulation of lipogenesis. LXR alpha is known to be activated by oxysterols and to regulate a wide range of genes, including members of the ATP-binding cassette (ABC) superfamily of transporter proteins (ABCA1 and ABCG1), surface constituents of plasma lipoproteins like apolipoprotein E, and cholesterol ester transport protein. The induced expression of LXR alpha may be related to foam-cell formation in atherosclerotic lesions. As a result, LXR alpha has been suggested as a potential therapeutic target for treating atherosclerosis. LXR alpha forms a heterodimer with RXR alpha and binds the DR4-type cis-element. Recently LXR alpha has been shown to act as a cAMP-responsive nuclear modulator of renin and c-myc expression, suggesting a possible involvement of LXR alpha in the cardiovascular system and in general gene transcription.

Synonyms:

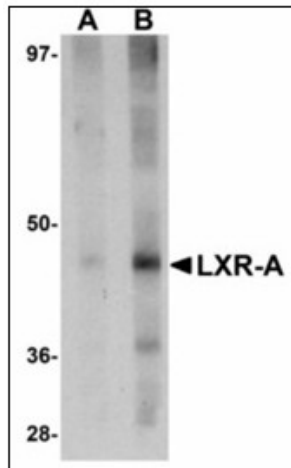
LXRA

Protein Families:

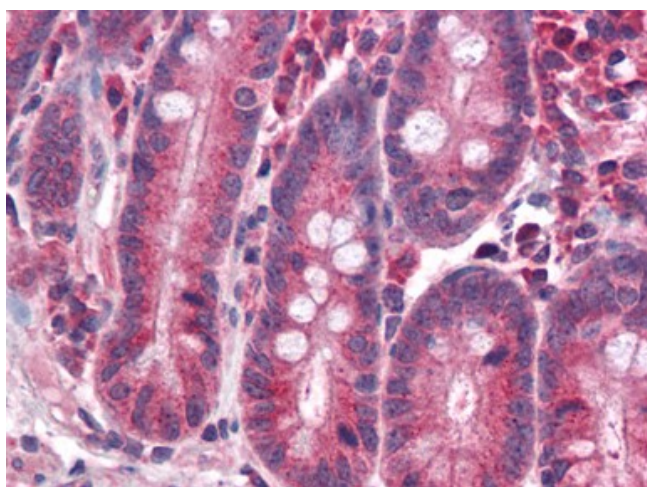
Druggable Genome, Nuclear Hormone Receptor, Transcription Factors

Protein Pathways:

PPAR signaling pathway

Product images:

Western blot analysis of LXR-A in rat liver tissue lysate with LXR-A antibody at (A) 1 and (B) 2 ug/ml.



Human Small Intestine: Formalin-Fixed, Paraffin-Embedded (FFPE)