

Product datasheet for **AP23499PU-N**

PRDM16 (C-term) Rabbit Polyclonal Antibody

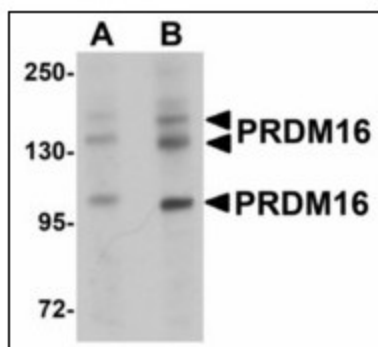
Product data:

Product Type:	Primary Antibodies
Applications:	ELISA, IF, IHC, WB
Recommended Dilution:	ELISA. Immunohistochemistry on Paraffin Sections: 5 µg/ml. Western Blot: 1 - 2 µg/ml.
Reactivity:	Human, Mouse, Rat
Host:	Rabbit
Clonality:	Polyclonal
Immunogen:	17 amino acid peptide from near the C-terminus of Human PRDM16
Specificity:	This antibody reacts to the C-term of Human PR Domain Containing 16 (PRDM16).
Formulation:	PBS State: Liquid purified Ig fraction Preservative: 0.02% Sodium Azide
Concentration:	lot specific
Purification:	Immunoaffinity Chromatography
Conjugation:	Unconjugated
Storage:	Store undiluted at 2-8°C for one month or (in aliquots) at -20°C for longer. Avoid repeated freezing and thawing.
Stability:	Shelf life: one year from despatch.
Gene Name:	PR domain 16
Database Link:	Entrez Gene 70673 Mouse Entrez Gene 100366024 Rat Entrez Gene 63976 Human Q9HAZ2
Synonyms:	KIAA1675, MEL1, PFM13

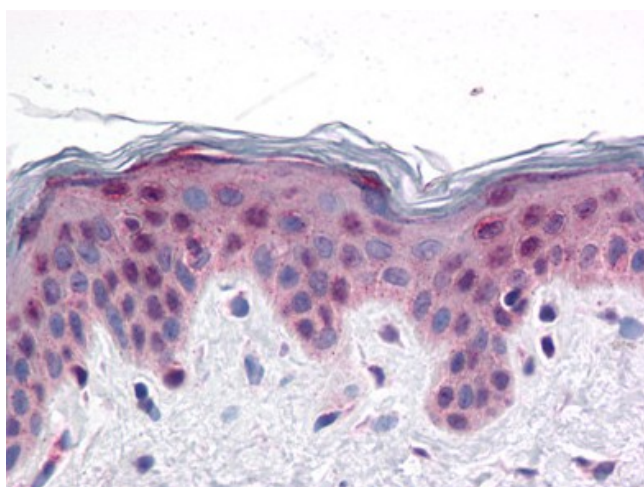


[View online »](#)

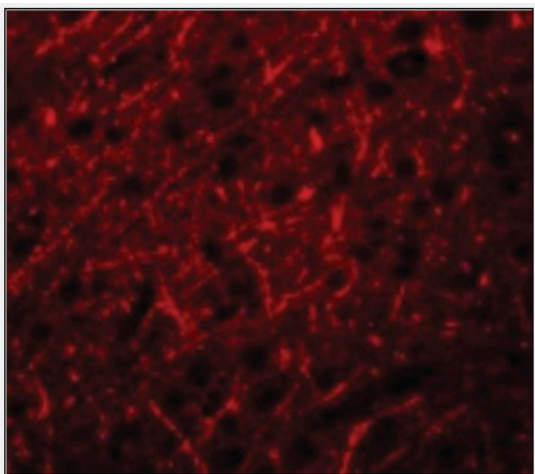
Product images:



Western blot analysis of PRDM16 in rat brain tissue lysate with after heat-induced antigen retrieval at (A) 1 and (B) 2 ug/ml.



Formalin-Fixed, Paraffin-Embedded Human Skin stained with PRDM16 Antibody at 5 ug/ml after heat-induced antigen retrieval.



Immunofluorescence of PRDM16 in Human Brain cells with PRDM16 Antibody at 20 ug/ml.