

## Product datasheet for **AP23495PU-N**

### **FAM59B (GAREM2) (C-term) Rabbit Polyclonal Antibody**

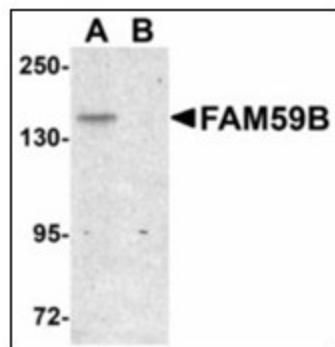
#### Product data:

Product Type:	Primary Antibodies
Applications:	ELISA, IHC, WB
Recommended Dilution:	<b>ELISA.</b> <b>Immunohistochemistry on Paraffin Sections:</b> 5 µg/ml. <b>Western Blot:</b> 1 - 2 µg/ml.
Reactivity:	Human, Mouse, Rat
Host:	Rabbit
Clonality:	Polyclonal
Immunogen:	Synthetic peptide - KLH conjugated
Specificity:	This antibody reacts to the C-term of Family With Sequence Similarity 59B (FAM59B).
Formulation:	PBS containing 0.02% sodium azide as preservative State: Liquid purified Ig fraction
Concentration:	lot specific
Purification:	Immunoaffinity Chromatography
Conjugation:	Unconjugated
Storage:	Store the antibody undiluted at 2-8°C.
Stability:	Shelf life: one year from despatch.
Gene Name:	GRB2 associated regulator of MAPK1 subtype 2
Database Link:	<a href="#">Entrez Gene 242915 Mouse</a> <a href="#">Entrez Gene 362801 Rat</a> <a href="#">Entrez Gene 150946 Human</a> <a href="#">Q75VX8</a>
Synonyms:	KIAA2038

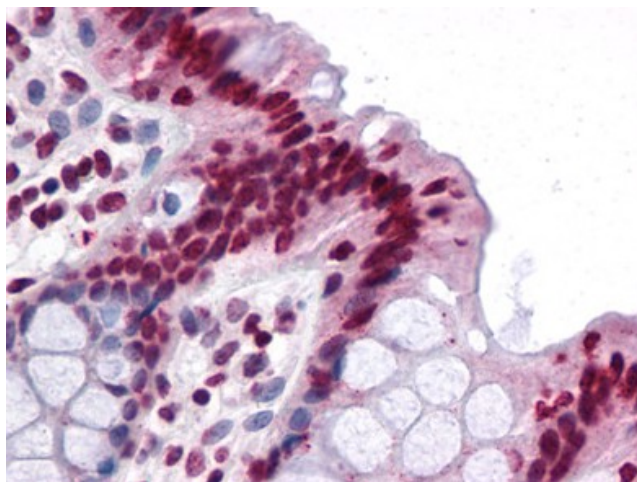


[View online »](#)

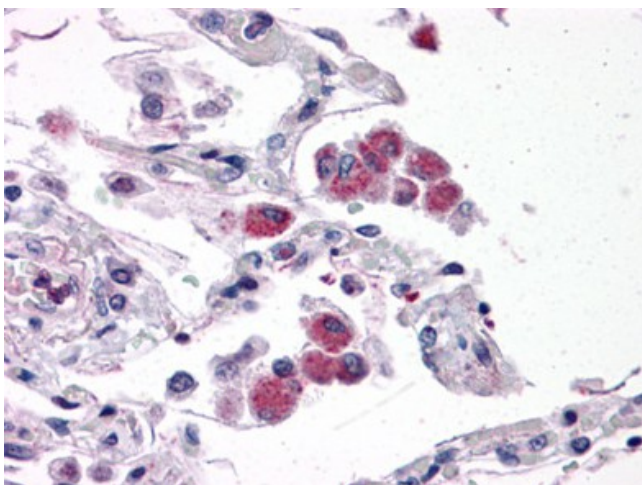
## Product images:



Western blot analysis of FAM59B in SK-N-SH cell lysate with FAM59B antibody at 1 ug/ml in (A) the absence and (B) the presence of blocking peptide.



Human Colon: Formalin-Fixed, Paraffin-Embedded (FFPE)



Human Lung: Formalin-Fixed, Paraffin-Embedded (FFPE)