

Product datasheet for **AP23493PU-N**

FRMPD4 Rabbit Polyclonal Antibody

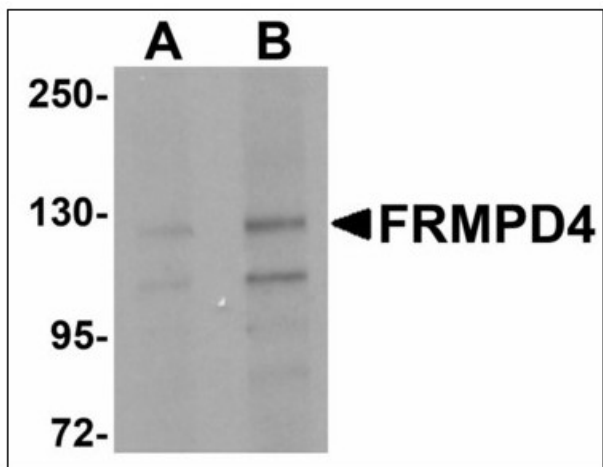
Product data:

Product Type:	Primary Antibodies
Applications:	ELISA, IHC, WB
Recommended Dilution:	ELISA. Immunohistochemistry on Paraffin Sections: 5 µg/ml. Western Blot: 1 - 2 µg/ml.
Reactivity:	Human
Host:	Rabbit
Clonality:	Polyclonal
Immunogen:	Synthetic peptide - KLH conjugated
Specificity:	This antibody reacts to the internal region of FERM And PDZ Domain Containing 4 (FRMPD4).
Formulation:	PBS containing 0.02% sodium azide as preservative State: Liquid purified Ig fraction
Concentration:	lot specific
Purification:	Immunoaffinity Chromatography
Conjugation:	Unconjugated
Storage:	Store the antibody undiluted at 2-8°C.
Stability:	Shelf life: one year from despatch.
Gene Name:	FERM and PDZ domain containing 4
Database Link:	Entrez Gene 9758 Human Q14CM0
Synonyms:	KIAA0316, PDZD10, PDZK10, Preso

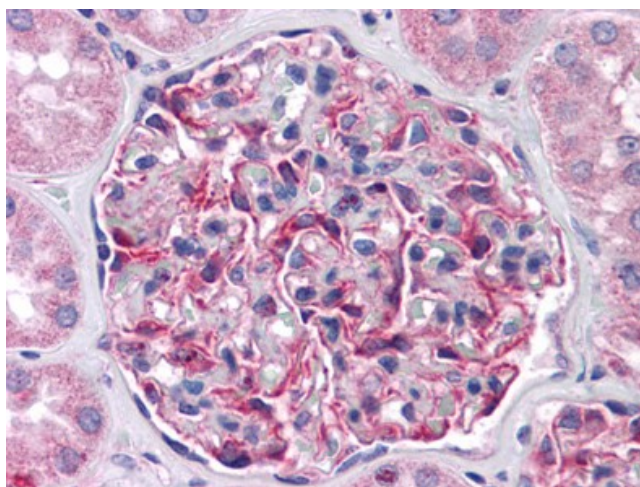


[View online »](#)

Product images:



Western blot analysis of FRMPD4 in SK-N-SH cell lysate with FRMPD4 antibody at (A) 1 and (B) 2 ug/ml.



Human Kidney: Formalin-Fixed, Paraffin-Embedded (FFPE)