

## Product datasheet for **AP23490PU-N**

### **GOLPH2 (GOLM1) Rabbit Polyclonal Antibody**

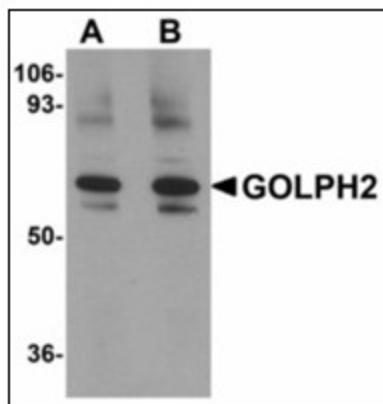
#### **Product data:**

Product Type:	Primary Antibodies
Applications:	ELISA, IHC, WB
Recommended Dilution:	<b>ELISA.</b> <b>Immunohistochemistry on Paraffin Sections:</b> 5 µg/ml. <b>Western Blot:</b> 0.25 - 0.5 µg/ml.
Reactivity:	Human, Mouse, Rat
Host:	Rabbit
Clonality:	Polyclonal
Immunogen:	Synthetic peptide - KLH conjugated
Specificity:	This antibody reacts to the internal region of Golgi Membrane Protein 1.
Formulation:	PBS containing 0.02% sodium azide as preservative State: Liquid purified Ig fraction
Concentration:	lot specific
Purification:	Immunoaffinity Chromatography
Conjugation:	Unconjugated
Storage:	Store the antibody undiluted at 2-8°C.
Stability:	Shelf life: one year from despatch.
Gene Name:	golgi membrane protein 1
Database Link:	<a href="#">Entrez Gene 105348 Mouse</a> <a href="#">Entrez Gene 680692 Rat</a> <a href="#">Entrez Gene 51280 Human</a> <a href="#">Q8NBJ4</a>
Synonyms:	Golgi phosphoprotein 2, Golgi membrane protein GP73, C9orf155, GOLPH2, PSEC0242, Golgi marker
Protein Families:	Transmembrane

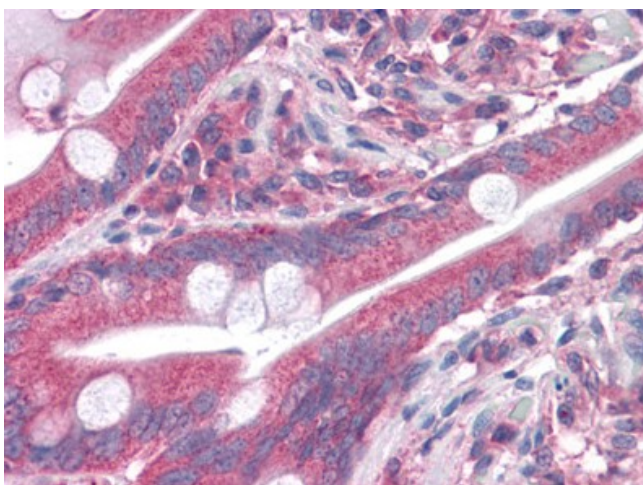


[View online »](#)

## Product images:



Western blot analysis of GOLPH2 in rat brain tissue lysate with GOLPH2 antibody at (A) 0.25 and (B) 0.5 ug/ml.



Human Small Intestine: Formalin-Fixed, Paraffin-Embedded (FFPE)