

Product datasheet for **AP23486PU-N**

FAM120B (C-term) Rabbit Polyclonal Antibody

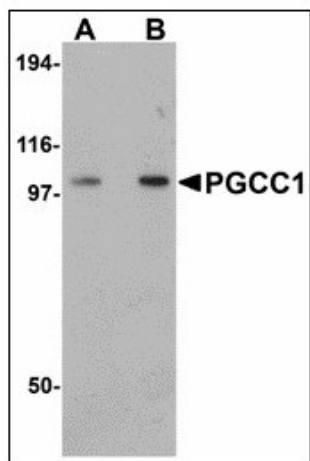
Product data:

Product Type:	Primary Antibodies
Applications:	ELISA, IHC, WB
Recommended Dilution:	ELISA. Immunohistochemistry on Paraffin Sections: 10 µg/ml. Western Blot: 0.5 - 1 µg/ml.
Reactivity:	Human, Mouse, Rat
Host:	Rabbit
Clonality:	Polyclonal
Immunogen:	Synthetic peptide - KLH conjugated
Specificity:	This antibody reacts to the C-term of Family with Sequence Similarity 120B (FAM120B).
Formulation:	PBS containing 0.02% sodium azide as preservative State: Liquid purified Ig fraction
Concentration:	lot specific
Purification:	Immunoaffinity Chromatography
Conjugation:	Unconjugated
Storage:	Store the antibody undiluted at 2-8°C.
Stability:	Shelf life: one year from despatch.
Gene Name:	family with sequence similarity 120B
Database Link:	Entrez Gene 67544 Mouse Entrez Gene 308218 Rat Entrez Gene 84498 Human Q96EK7
Synonyms:	FAM120B, CCPG, KIAA1838, Constitutive coactivator of PPAR-gamma, Constitutive coactivator of PPARG, PPARG constitutive coactivator 1, PGCC1, Protein FAM120B

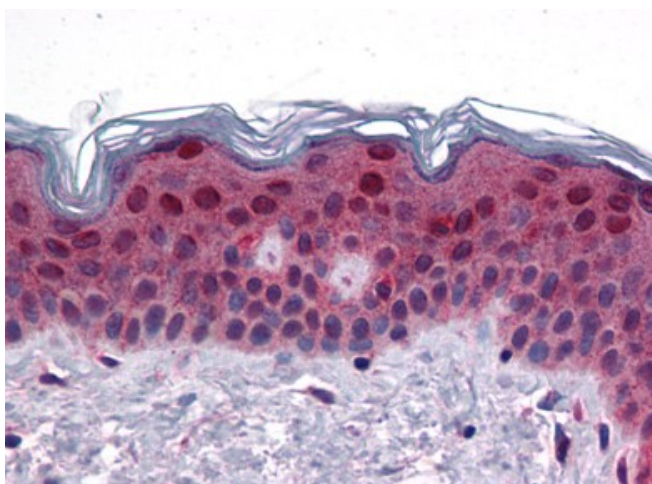


[View online »](#)

Product images:



Western blot analysis of PGCC1 in rat thymus tissue lysate with PGCC1 antibody at (A) 0.5 and (B) 1 ug/ml.



Human Skin: Formalin-Fixed, Paraffin-Embedded (FFPE)