

## Product datasheet for **AP23481PU-N**

### EFEMP1 (C-term) Rabbit Polyclonal Antibody

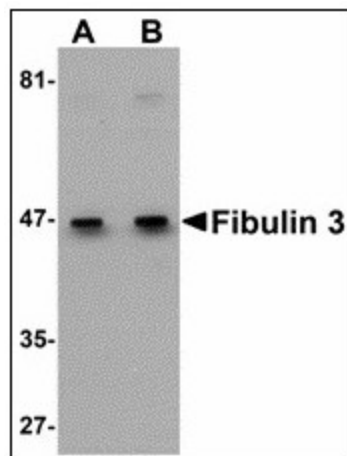
#### Product data:

Product Type:	Primary Antibodies
Applications:	ELISA, IF, IHC, WB
Recommended Dilution:	<b>ELISA.</b> <b>Immunocytochemistry.</b> <b>Immunohistochemistry on Paraffin Sections:</b> 5 µg/ml. <b>Western Blot:</b> 0.5 - 1 µg/ml.
Reactivity:	Human, Mouse, Rat
Host:	Rabbit
Clonality:	Polyclonal
Immunogen:	Synthetic peptide - KLH conjugated
Specificity:	This antibody reacts to the C-term of Egf-containing Fibulin-like Extracellular Matrix Protein 1 (EFEMP1).
Formulation:	PBS containing 0.02% sodium azide as preservative State: Liquid purified Ig fraction
Concentration:	lot specific
Purification:	Immunoaffinity Chromatography
Conjugation:	Unconjugated
Storage:	Store the antibody undiluted at 2-8°C.
Stability:	Shelf life: one year from despatch.
Gene Name:	EGF containing fibulin like extracellular matrix protein 1
Database Link:	<a href="#">Entrez Gene 216616 Mouse</a> <a href="#">Entrez Gene 305604 Rat</a> <a href="#">Entrez Gene 2202 Human Q12805</a>
Synonyms:	DHRD, DRAD, FBNL, MLVT, MTLV, S1-5, Fibulin 3, EFEMP1, FBLN3
Protein Families:	Secreted Protein

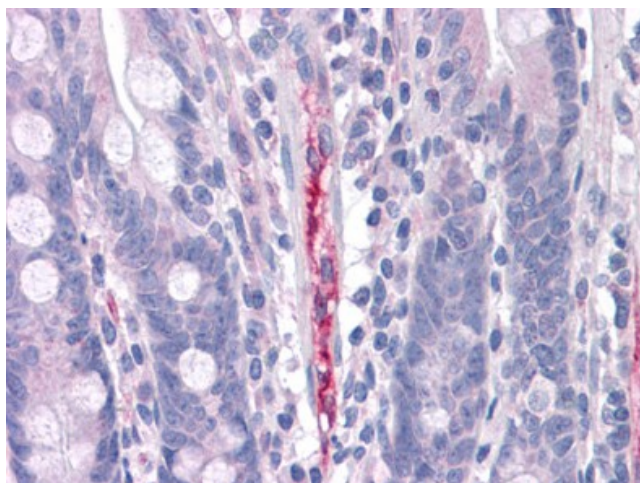


[View online »](#)

## Product images:



Western blot analysis of Fibulin 3 in HeLa cell lysate with Fibulin 3 antibody at (A) 0.5 and (B) 1 ug/ml.



Human Small Intestine, Capillary: Formalin-Fixed, Paraffin-Embedded (FFPE)