

## Product datasheet for **AP23479PU-N**

### **RSPO1 (N-term) Rabbit Polyclonal Antibody**

#### **Product data:**

Product Type:	Primary Antibodies
Applications:	ELISA, IHC, WB
Recommended Dilution:	<b>ELISA.</b> <b>Immunohistochemistry on Paraffin Sections:</b> 5 µg/ml. <b>Western Blot:</b> 1 - 2 µg/ml.
Reactivity:	Human, Mouse, Rat
Host:	Rabbit
Clonality:	Polyclonal
Immunogen:	RSPO1 antibody was raised against a 16 amino acid peptide from near the amino terminus of Human RSPO1. Epitope: N-terminus
Specificity:	This antibody detects RSPO1.
Formulation:	PBS containing 0.02% Sodium Azide as preservative State: Liquid purified Ig fraction
Concentration:	lot specific
Purification:	Immunoaffinity Chromatography
Conjugation:	Unconjugated
Storage:	Store the antibody undiluted at 2-8°C for one month or (in aliquots) at -20°C for longer. Avoid repeated freezing and thawing. Dilute only prior to immediate use.
Stability:	Shelf life one year from despatch.
Gene Name:	R-spondin 1
Database Link:	<u><a href="#">Entrez Gene 192199 Mouse</a></u> <u><a href="#">Entrez Gene 313589 Rat</a></u> <u><a href="#">Entrez Gene 284654 Human</a></u> <u><a href="#">Q2MKA7</a></u>



[View online »](#)

**Background:**

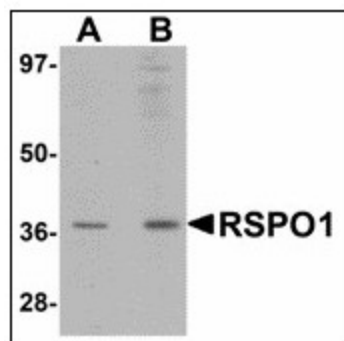
RSPO1 is a member of a family of secreted growth factors that can operate through the canonical Wnt signaling pathway by stabilizing the intracellular b-catenin, thereby regulating functions mediated by b-catenin such as cell fate decisions and embryonic patterning. RSPO1 was recently identified through linkage analysis to be involved in sex determination and mammalian ovarian development. RSPO1 is thought to regulate cellular responsiveness to Wnt ligands by modulating the cell-surface expression of the Wnt co-receptor LRP6 by interfering with the DKK/Kremen-mediated internalization of LRP6 through an interaction with Kremen, resulting in increased LRP6 cell-surface levels. At least two isoforms of RSPO1 are known to exist.

**Synonyms:**

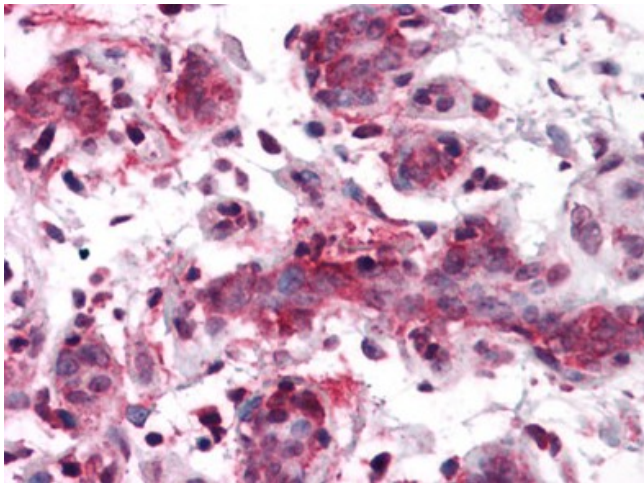
R-spondin-1

**Protein Families:**

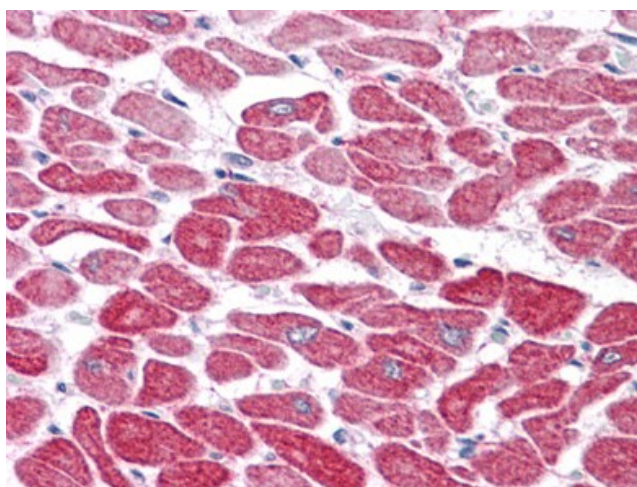
Secreted Protein

**Product images:**

Western blot analysis of RSPO1 in rat spleen tissue lysate with RSPO1 antibody at (A) 1 and (B) 2 ug/ml.



Human Breast: Formalin-Fixed, Paraffin-Embedded (FFPE)



Human Heart: Formalin-Fixed, Paraffin-Embedded (FFPE)