

## Product datasheet for **AP23478PU-N**

### SH3BP4 (C-term) Rabbit Polyclonal Antibody

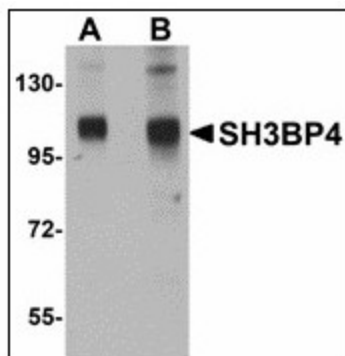
#### Product data:

Product Type:	Primary Antibodies
Applications:	ELISA, IHC, WB
Recommended Dilution:	<b>ELISA.</b> <b>Immunohistochemistry on Paraffin Sections:</b> 5 µg/ml. <b>Western Blot:</b> 1 - 2 µg/ml.
Reactivity:	Human, Mouse, Rat
Host:	Rabbit
Clonality:	Polyclonal
Immunogen:	Synthetic peptide - KLH conjugated
Specificity:	This antibody reacts to SH3-domain Binding Protein 4 (SH3BP4).
Formulation:	PBS containing 0.02% sodium azide State: Liquid purified Ig fraction
Concentration:	lot specific
Purification:	Immunoaffinity Chromatography
Conjugation:	Unconjugated
Storage:	Store the antibody undiluted at 2-8°C for one month or (in aliquots) at -20°C for longer. Avoid repeated freezing and thawing.
Stability:	Shelf life: one year from despatch.
Gene Name:	SH3 domain binding protein 4
Database Link:	<a href="#">Entrez Gene 64634 Rat</a> <a href="#">Entrez Gene 98402 Mouse</a> <a href="#">Entrez Gene 23677 Human</a> <a href="#">Q9P0V3</a>
Synonyms:	SH3 domain-binding protein 4, SH3BP-4, BOG25, EHB10, TTP
Protein Families:	Druggable Genome

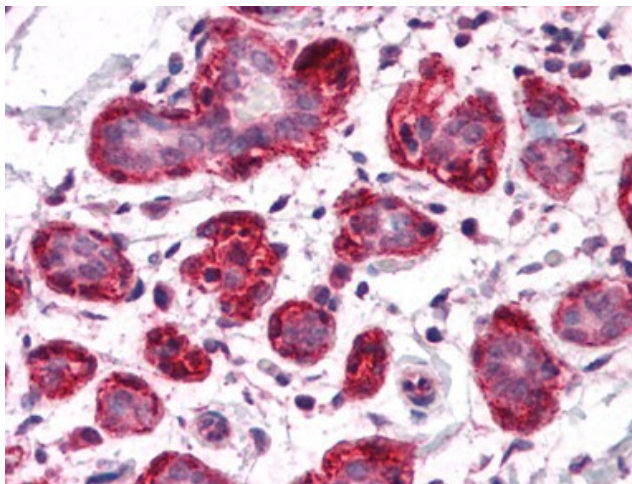


[View online »](#)

## Product images:



Western blot analysis of SH3BP4 in rat lung tissue lysate with SH3BP4 antibody at (A) 1 and (B) 2 ug/ml.



Human Breast: Formalin-Fixed, Paraffin-Embedded (FFPE)