

Product datasheet for **AP23473PU-N**

GNPDA1 (C-term) Rabbit Polyclonal Antibody

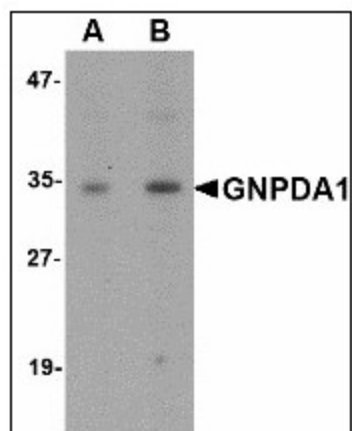
Product data:

Product Type:	Primary Antibodies
Applications:	ELISA, IF, IHC, WB
Recommended Dilution:	ELISA. Immunocytochemistry. Immunohistochemistry on Paraffin Sections: 5 µg/ml. Western Blot: 1 - 2 µg/ml.
Reactivity:	Human, Mouse, Rat
Host:	Rabbit
Clonality:	Polyclonal
Immunogen:	Synthetic peptide - KLH conjugated
Specificity:	This antibody reacts to the C-term of Putative Glucosamine-6-phosphate Isomerase (GNPDA1).
Formulation:	PBS containing 0.02% sodium azide as preservative State: Liquid purified Ig fraction
Concentration:	lot specific
Purification:	Immunoaffinity Chromatography
Conjugation:	Unconjugated
Storage:	Store the antibody undiluted at 2-8°C for one month or (in aliquots) at -20°C for longer. Avoid repeated freezing and thawing.
Stability:	Shelf life: one year from despatch.
Gene Name:	glucosamine-6-phosphate deaminase 1
Database Link:	Entrez Gene 26384 Mouse Entrez Gene 683570 Rat Entrez Gene 10007 Human P46926
Synonyms:	Glucosamine-6-phosphate isomerase 1, Oscillin, GNPI, HLN, KIAA0060, GlcN6P deaminase 1
Protein Pathways:	Amino sugar and nucleotide sugar metabolism, Metabolic pathways

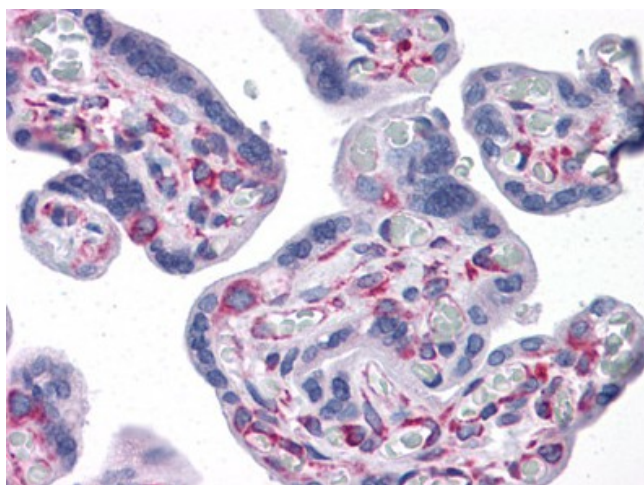


[View online »](#)

Product images:



Western blot analysis of GNPDA1 in mouse kidney lysate with GNPDA1 antibody at (A) 1 and (B) 2 ug/ml.



Human Placenta: Formalin-Fixed, Paraffin-Embedded (FFPE)