

Product datasheet for **AP23471PU-N**

Calpain 6 (CAPN6) (C-term) Rabbit Polyclonal Antibody

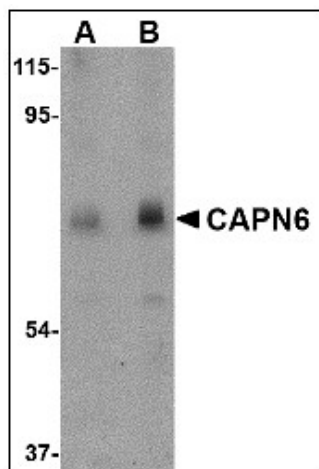
Product data:

Product Type:	Primary Antibodies
Applications:	IHC, WB
Recommended Dilution:	Immunohistochemistry on Paraffin Sections: 5 µg/ml. Western Blot: 0.5 - 1 µg/ml.
Reactivity:	Human, Mouse, Rat
Host:	Rabbit
Clonality:	Polyclonal
Immunogen:	Synthetic peptide, CAPN6 antibody was raised against an 18 amino acid peptide from near the carboxy terminus of human CAPN6.
Specificity:	This antibody reacts to the C-term of Calpain 6 (CAPN6).
Formulation:	PBS containing 0.02% sodium azide as preservative State: Liquid purified Ig fraction
Concentration:	lot specific
Purification:	Immunoaffinity Chromatography
Conjugation:	Unconjugated
Storage:	Store the antibody undiluted at 2-8°C for one month or (in aliquots) at -20°C for longer. Avoid repeated freezing and thawing.
Stability:	Shelf life: one year from despatch.
Gene Name:	calpain 6
Database Link:	Entrez Gene 12338 Mouse Entrez Gene 83685 Rat Entrez Gene 827 Human Q9Y6Q1
Synonyms:	Calpamodulin, CAPN6, CALPM, CANPX
Protein Families:	Druggable Genome, Protease

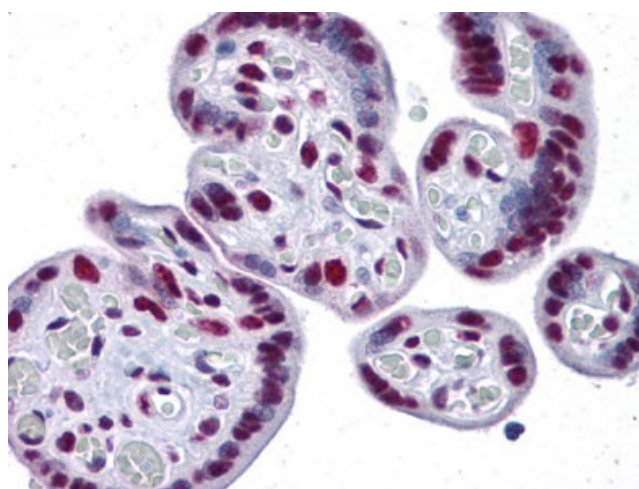


[View online »](#)

Product images:



Western blot analysis of CAPN6 in rat lung tissue lysate with CAPN6 antibody at (A) 0.5 and (B) 1 ug/ml.



Human Placenta: Formalin-Fixed, Paraffin-Embedded (FFPE)