

Product datasheet for **AP23470PU-N**

ASAH2 (C-term) Rabbit Polyclonal Antibody

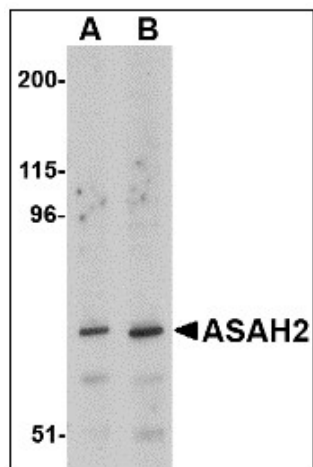
Product data:

Product Type:	Primary Antibodies
Applications:	IHC, WB
Recommended Dilution:	Immunohistochemistry on Paraffin Sections: 5 µg/ml. Western Blot: 1 µg/ml.
Reactivity:	Human, Mouse, Rat
Host:	Rabbit
Clonality:	Polyclonal
Immunogen:	Synthetic peptide, ASAH2 antibody was raised against a 17 amino acid peptide near the carboxy terminus of the human ASAH2.
Specificity:	This antibody reacts to the C-term of N-acylsphingosine Amidohydrolase (non-lysosomal Ceramidase) 2 (ASAH2).
Formulation:	PBS containing 0.02% sodium azide as preservative State: Liquid purified Ig fraction
Concentration:	lot specific
Purification:	Immunoaffinity Chromatography
Conjugation:	Unconjugated
Storage:	Store the antibody undiluted at 2-8°C for one month or (in aliquots) at -20°C for longer. Avoid repeated freezing and thawing.
Stability:	Shelf life: one year from despatch.
Gene Name:	N-acylsphingosine amidohydrolase (non-lysosomal ceramidase) 2
Database Link:	Entrez Gene 653308 Human Entrez Gene 56624 Human Q9NR71
Synonyms:	HNAC1, BCDase, LCDase, hCD, Non-lysosomal ceramidase

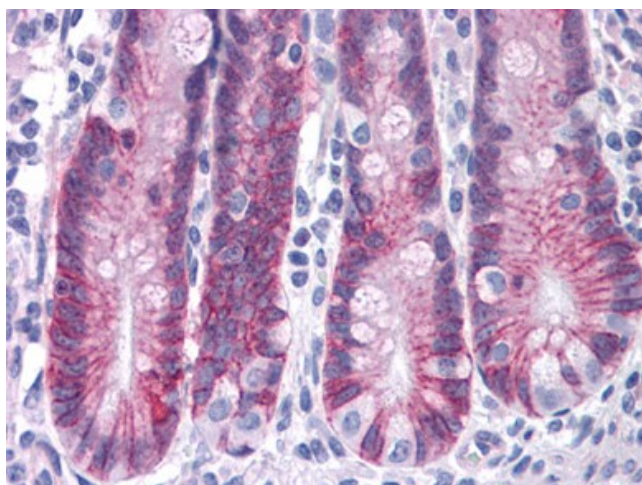


[View online »](#)

Product images:



Western blot analysis of ASAH2 in 293 cell lysate with ASAH2 antibody at (A) 1 and (B) 2 ug/ml.



Human Small Intestine: Formalin-Fixed, Paraffin-Embedded (FFPE)