

Product datasheet for **AP23468PU-N**

DLGAP4 Rabbit Polyclonal Antibody

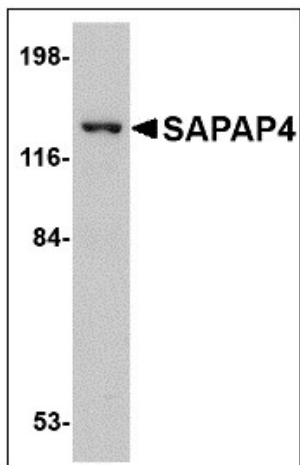
Product data:

Product Type:	Primary Antibodies
Applications:	IHC, WB
Recommended Dilution:	Immunohistochemistry on Paraffin Sections: 5 µg/ml. Western Blot: 0.5 - 1 µg/ml.
Reactivity:	Human
Host:	Rabbit
Clonality:	Polyclonal
Immunogen:	Synthetic peptide, SAPAP4 antibody was raised against a 13 amino acid peptide from near the center of human SAPAP4.
Specificity:	This antibody reacts to the internal region of Discs, Large (Drosophila) Homolog-associated Protein 4 (DLGAP4).
Formulation:	PBS containing 0.02% sodium azide as preservative State: Liquid purified Ig fraction
Concentration:	lot specific
Purification:	Immunoaffinity Chromatography
Conjugation:	Unconjugated
Storage:	Store the antibody undiluted at 2-8°C for one month or (in aliquots) at -20°C for longer. Avoid repeated freezing and thawing.
Stability:	Shelf life: one year from despatch.
Gene Name:	DLG associated protein 4
Database Link:	Entrez Gene 22839 Human Q9Y2H0
Synonyms:	DAP4, DAP-4, KIAA0964

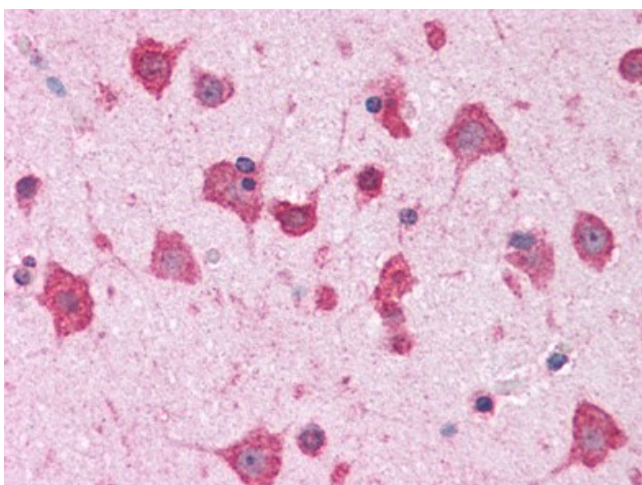


[View online »](#)

Product images:



Western blot analysis of DLGAP4 in SK-N-SH cell lysate with DLGAP4 antibody at 1 ug/ml.



Human Brain, Cortex: Formalin-Fixed, Paraffin-Embedded (FFPE)