

## Product datasheet for **AP23467PU-N**

### DLGAP2 Rabbit Polyclonal Antibody

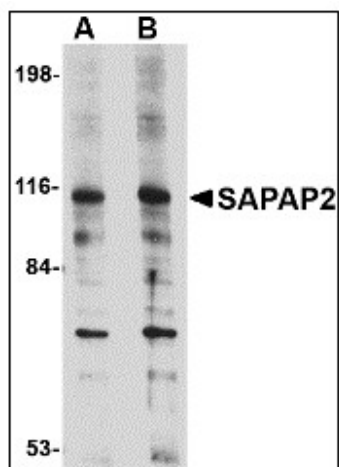
#### Product data:

Product Type:	Primary Antibodies
Applications:	IHC, WB
Recommended Dilution:	<b>Immunohistochemistry on Paraffin Sections:</b> 5 µg/ml. <b>Western Blot:</b> 0.5 - 1 µg/ml.
Reactivity:	Human, Mouse, Rat
Host:	Rabbit
Clonality:	Polyclonal
Immunogen:	Synthetic peptide, 16 amino acid peptide from near the center of human SAPAP2
Specificity:	This antibody reacts to the internal region of Psd-95/sap90-associated Protein-2 (DLGAP2).
Formulation:	PBS containing 0.02% sodium azide as preservative State: Liquid purified Ig fraction
Concentration:	lot specific
Purification:	Immunoaffinity Chromatography
Conjugation:	Unconjugated
Storage:	Store the antibody undiluted at 2-8°C for one month or (in aliquots) at -20°C for longer. Avoid repeated freezing and thawing.
Stability:	Shelf life: one year from despatch.
Gene Name:	DLG associated protein 2
Database Link:	<a href="#">Entrez Gene 116681 Rat</a> <a href="#">Entrez Gene 244310 Mouse</a> <a href="#">Entrez Gene 9228 Human Q9P1A6</a>
Synonyms:	DAP2, DAP-2, SAPAP2, Disks large-associated protein 2

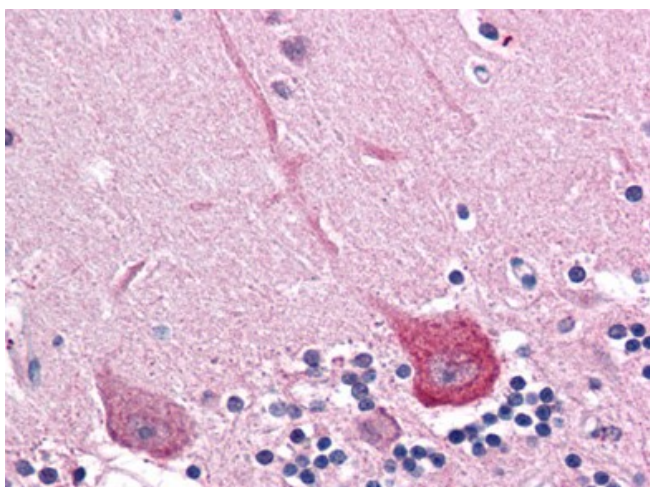


[View online »](#)

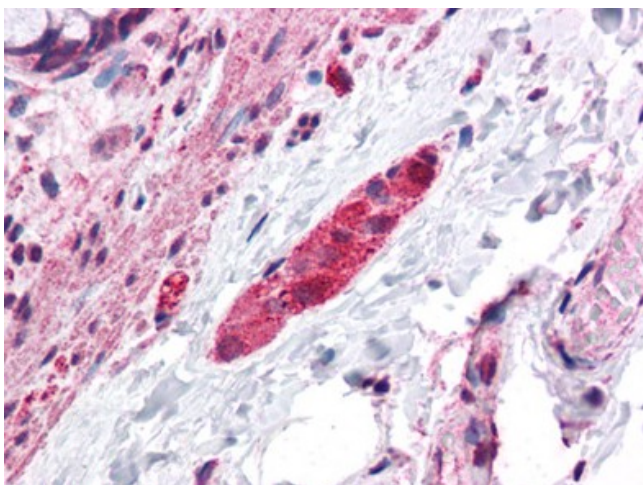
## Product images:



Western blot analysis of DLGAP2 in L1210 cell lysate with DLGAP2 antibody at (A) 0.5 and (B) 1 ug/ml.



Human Brain, Cerebellum: Formalin-Fixed, Paraffin-Embedded (FFPE)



Human Colon, Submucosal Plexus