

## Product datasheet for **AP23465PU-N**

### **CAPS1 (CADPS) (N-term) Rabbit Polyclonal Antibody**

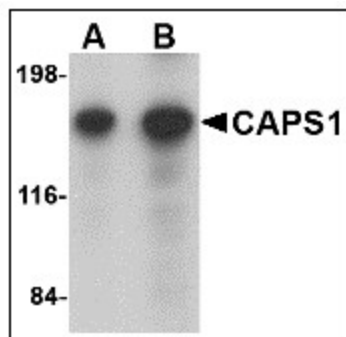
#### **Product data:**

Product Type:	Primary Antibodies
Applications:	IHC, WB
Recommended Dilution:	<b>Immunohistochemistry on Paraffin Sections:</b> 5 µg/ml. <b>Western Blot:</b> 0.25 - 0.5 µg/ml.
Reactivity:	Human, Mouse, Rat
Host:	Rabbit
Clonality:	Polyclonal
Immunogen:	Synthetic peptide, 21 amino acid peptide near the amino terminus of the human CAPS1
Specificity:	This antibody reacts to Ca-dependent Activator Protein For Secretion (CADPS).
Formulation:	PBS containing 0.02% sodium azide as preservative State: Liquid purified Ig fraction
Concentration:	lot specific
Purification:	Immunoaffinity Chromatography
Conjugation:	Unconjugated
Storage:	Store the antibody undiluted at 2-8°C for one month or (in aliquots) at -20°C for longer. Avoid repeated freezing and thawing.
Stability:	Shelf life: one year from despatch.
Gene Name:	Ca <sup>2+</sup> dependent secretion activator
Database Link:	<a href="#">Entrez Gene 26989 Rat</a> <a href="#">Entrez Gene 27062 Mouse</a> <a href="#">Entrez Gene 8618 Human</a> <a href="#">Q9ULU8</a>
Background:	CADPS encodes a novel neural/endocrine-specific cytosolic and peripheral membrane protein required for the Ca <sup>2+</sup> -regulated exocytosis of secretory vesicles. CADPS acts at a stage in exocytosis that follows ATP-dependent priming, which involves the essential synthesis of phosphatidylinositol 4,5-bisphosphate (PtdIns(4,5)P <sub>2</sub> ).
Synonyms:	CAPS, CAPS1, CAPS-1, KIAA1121

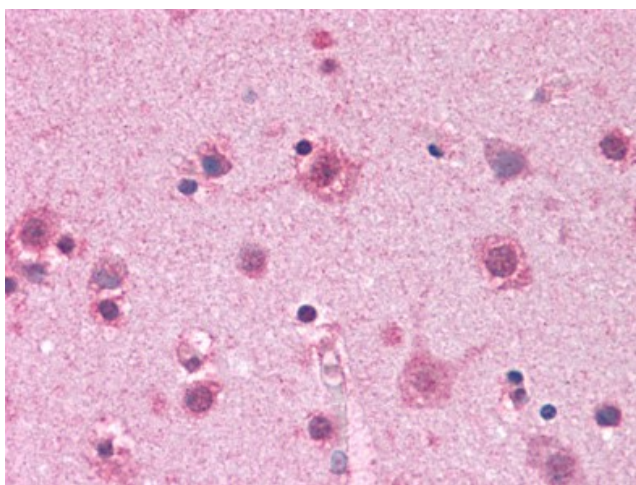


[View online »](#)

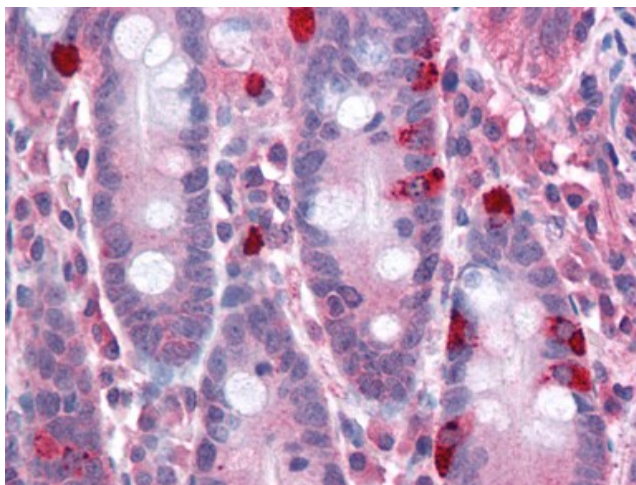
## Product images:



Western blot analysis of CAPS1 in rat brain tissue lysate with CAPS1 antibody at (A) 0.25 and (B) 0.5 ug/ml.



Human Brain, Cortex: Formalin-Fixed, Paraffin-Embedded (FFPE)



Human Small Intestine: Formalin-Fixed, Paraffin-Embedded (FFPE)