

Product datasheet for **AP23461AF-N**

Red Blood Cells Rabbit Polyclonal Antibody

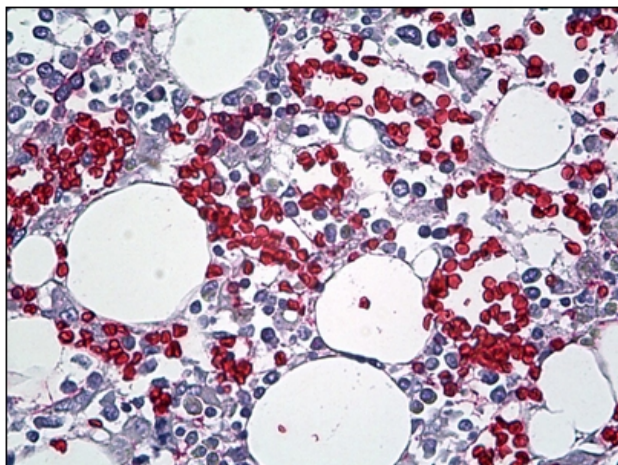
Product data:

Product Type:	Primary Antibodies
Applications:	IHC
Recommended Dilution:	Immunohistochemistry on Paraffin Sections: 1/100. Agglutination assays: 1/32 (serial dilutions of washed pooled cells on a titer plate).
Reactivity:	Human
Host:	Rabbit
Isotype:	IgG
Clonality:	Polyclonal
Immunogen:	Human washed pooled Red Blood Cells (RBC).
Specificity:	The antibody recognizes Red Blood Cells (RBC) in Agglutination assay.
Formulation:	PBS, pH 7.2 containing 0.01% Sodium Azide without stabilizing proteins. State: Serum
Purification:	Delipidation and Defibrination.
Conjugation:	Unconjugated
Storage:	Store the antibody undiluted at 2-8°C for one month or (in aliquots) at -20°C for longer. Avoid repeated freezing and thawing.
Stability:	Shelf life: one year from despatch.
Background:	Red blood cells are the most common type of blood cell and are the vertebrate body's principal means of delivering oxygen from the lungs or gills to body tissues via the blood.
Synonyms:	RBCs, RBC



[View online »](#)

Product images:



Human Bone Marrow: Formalin-Fixed, Paraffin-Embedded (FFPE)