

## Product datasheet for **AP23456SU-N**

### **APE1 (APEX1) Rabbit Polyclonal Antibody**

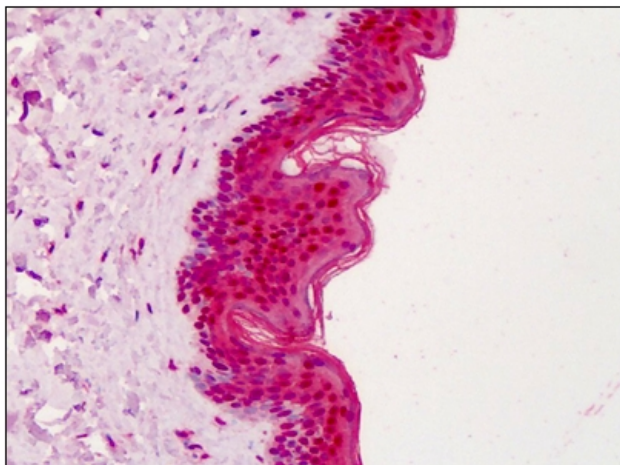
#### **Product data:**

Product Type:	Primary Antibodies
Applications:	IHC, WB
Recommended Dilution:	<b>Immunohistochemistry on Paraffin Sections:</b> 1/100. <b>Western Blot.</b>
Reactivity:	Human
Host:	Rabbit
Isotype:	IgG
Clonality:	Polyclonal
Specificity:	Recognizes APEX Nuclease (APEX1).
Formulation:	State: Serum State: Antiserum containing no preservative.
Conjugation:	Unconjugated
Storage:	Store the antibody (in aliquots) at -20°C. Avoid repeated freezing and thawing.
Stability:	Shelf life: One year from despatch.
Gene Name:	apurinic/aprimidinic endodeoxyribonuclease 1
Database Link:	<a href="#">Entrez Gene 328 Human P27695</a>
Background:	Apurinic/aprimidinic (AP) sites occur frequently in DNA molecules by spontaneous hydrolysis, by DNA damaging agents or by DNA glycosylases that remove specific abnormal bases. AP sites are pre-mutagenic lesions that can prevent normal DNA replication so the cell contains systems to identify and repair such sites. Class II AP endonucleases cleave the phosphodiester backbone 5' to the AP site. This gene encodes the major AP endonuclease in human cells. Splice variants have been found for this gene; all encode the same protein.
Synonyms:	APE, APEX, APX, HAP1, REF1, APEN
Protein Families:	Druggable Genome, Stem cell - Pluripotency, Transcription Factors
Protein Pathways:	Base excision repair

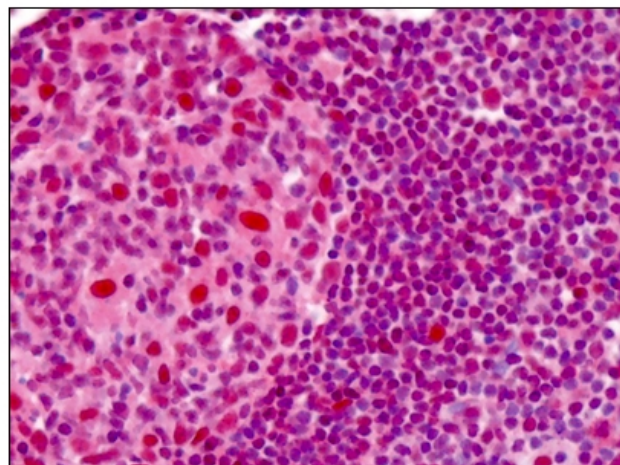


[View online »](#)

**Product images:**



Human Skin: Formalin-Fixed, Paraffin-Embedded (FFPE)



Human Tonsil: Formalin-Fixed, Paraffin-Embedded (FFPE)