

Product datasheet for **AP23448SU-N**

LGR7 (RXFP1) (609-624) Rabbit Polyclonal Antibody

Product data:

Product Type:	Primary Antibodies
Applications:	IF, IHC
Recommended Dilution:	Immunocytochemistry: 1/4000. Immunohistochemistry on Paraffin Sections: 1/5000.
Reactivity:	Human, Monkey, Porcine, Rat, Mouse
Host:	Rabbit
Clonality:	Polyclonal
Immunogen:	Synthetic Human Relaxin Receptor 1 (aa 609-624) KLH-conjugated
Specificity:	Recognizes Human Relaxin Receptor 1 (609-624). There was no cross reactivity obtained with Human Relaxin Receptor 2 (RXFP2, LGR8)
Formulation:	State: Serum State: Lyophilized Serum
Reconstitution Method:	Restore in aqua bidest to initial volume.
Conjugation:	Unconjugated
Storage:	Store lyophilized at 2-8°C for 6 months or at -20°C long term. After reconstitution store the antibody undiluted at 2-8°C for one month or (in aliquots) at -20°C long term. Avoid repeated freezing and thawing.
Stability:	Shelf life: one year from despatch.
Gene Name:	relaxin/insulin like family peptide receptor 1
Database Link:	Entrez Gene 295144 Rat Entrez Gene 381489 Mouse Entrez Gene 701107 Monkey Entrez Gene 59350 Human Q9HBX9



[View online »](#)

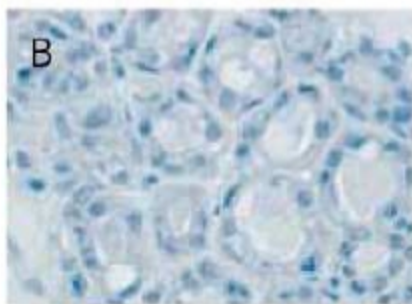
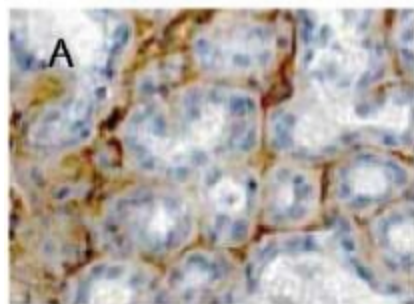
Background: LGR7 is a low density lipoprotein receptor of 757 amino acid belonging to the G-protein coupled receptor 1 family with rhodopsin-like receptor activity. It has seven transmembrane region, cysteine-rich motif, 10 LRR domains and 5 N-glycosylation sites in the N terminus. Research reports show that it has receptor for relaxins (RLN1 and RLN2) which stimulates adenylate cyclase activation, substrate adhesion, and chemo migratory capacity of mononuclear leukocytes. LGR7 is critical for mediating these biological responses by use of RNA interference lentiviral short hairpin constructs. It is widely expressed in 86% of 15 primary EC tissue samples including brain, kidney, testis and endometrium.

Synonyms: LGR7

Protein Families: Druggable Genome, GPCR, Transmembrane

Protein Pathways: Neuroactive ligand-receptor interaction

Product images:



Immunohistochemistry of RXFP1 staining in Paraffin Section of healthy Human breast tissue from lactating patient. The section was incubated with AP23448SU (1/5000) overnight and detected using Peroxidase anti Peroxidase (PAP)-Avidin-Biotin-Complex (ABC) combination method. DAB was used as the chromogen. The section was counter-stained with haemalaun. A: AP23448SU recognizes the stromal cells within the glands. B: Preimmune serum at the same dilution. Scale bar = 50 μ m Ivell Re et al. (2003) *Reprod Biol Endocrinol* 1:114