

Product datasheet for **AP23432PU-S**

CCL28 Rabbit Polyclonal Antibody

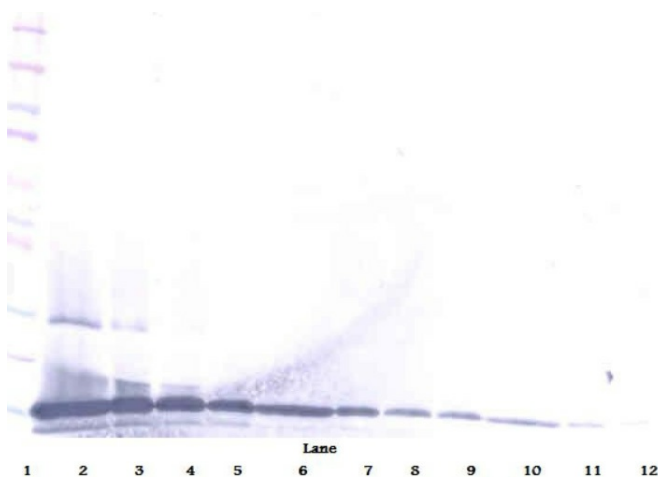
Product data:

Product Type:	Primary Antibodies
Applications:	ELISA, IF, WB
Recommended Dilution:	Sandwich ELISA: To detect Human MEC by Sandwich ELISA (using 100µl/well antibody solution) a concentration of 0.5-2.0 µg/ml of this antibody is required. This antigen affinity purified antibody, in conjunction with Biotinylated Anti-Human MEC (Cat.-No AP23432BT-N or AP23432BT-S) as a detection antibody, allows the detection of at least 0.2-0.4 ng/well of recombinant Human MEC. Western Blot: To detect Human MEC by Western Blot analysis this antibody can be used at a concentration of 0.1-0.2 µg/ml. Used in conjunction with compatible secondary reagents the detection limit for recombinant Human MEC is 1.5-3.0 ng/lane, under either reducing or non-reducing conditions. Immunofluorescence: This antibody (Lots 0211M242Rb and 0811M242Rb)stained CACO-2 cells. The primary antibody was incubated at 3.0 µg/ml overnight at 4°C followed by a fluorescent labeled secondary antibody. <i>Information courtesy of the Cell Profiling group, SciLifeLab Stockholm.</i>
Reactivity:	Human
Host:	Rabbit
Clonality:	Polyclonal
Immunogen:	Highly pure E.coli derived recombinant Human MEC (Cat.-No PA246)
Specificity:	Recognizes Human MEC. Other species not tested.
Formulation:	PBS, pH 7.2 without preservatives State: Aff - Purified State: Lyophilized (sterile filtered) purified Ig fraction
Reconstitution Method:	Centrifuge vial prior to opening. Restore in sterile water to a concentration of 0.1-1.0 mg/ml.
Purification:	Affinity Chromatography employing an immobilized Human MEC matrix.
Conjugation:	Unconjugated
Storage:	Store the lyophilized antibody at -20°C. Following reconstitution it is stable for two weeks at 2-8°C. Frozen aliquots are stable for 6 months when stored at -20°C. Avoid repeated freezing and thawing.

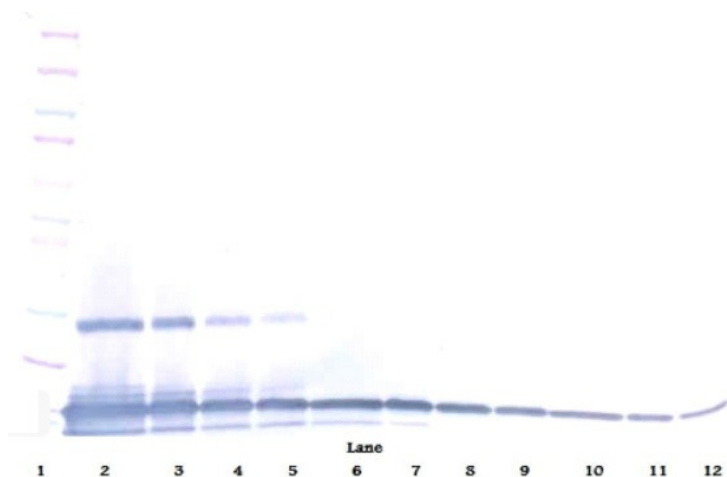


[View online »](#)

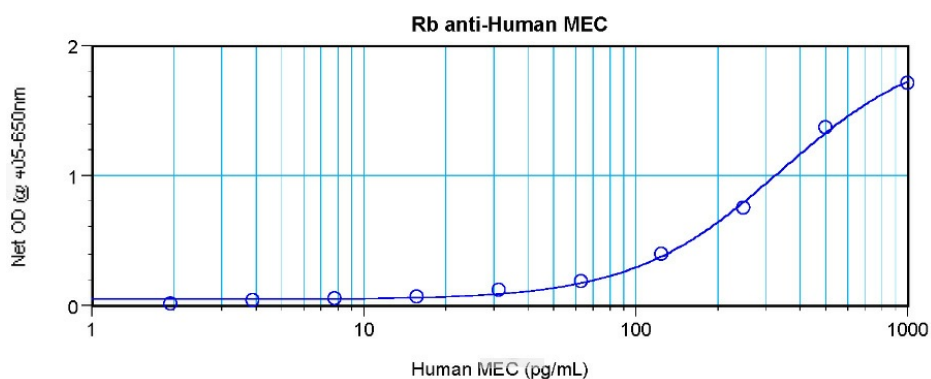
Stability:	Shelf life: One year from despatch.
Gene Name:	C-C motif chemokine ligand 28
Database Link:	Entrez Gene 56477 Human Q9NRJ3
Background:	CCL28, also known as chemokine (C-C motif) ligand 28 or mucosae-associated epithelial chemokine (MEC), belongs to the subfamily of small cytokine CC proteins. CCL28 is expressed by columnar epithelial cells in the gut, lung, breast and the salivary glands and drives the mucosal homing of T and B lymphocytes that express CCR10, and the migration of eosinophils expressing CCR3. This chemokine is constitutively expressed in the colon, but its levels can be increased by pro-inflammatory cytokines and certain bacterial products implying a role in effector cell recruitment to sites of epithelial injury.
Synonyms:	C-C motif chemokine 28, SCYA28
Protein Families:	Druggable Genome, Secreted Protein
Protein Pathways:	Chemokine signaling pathway, Cytokine-cytokine receptor interaction

Product images:

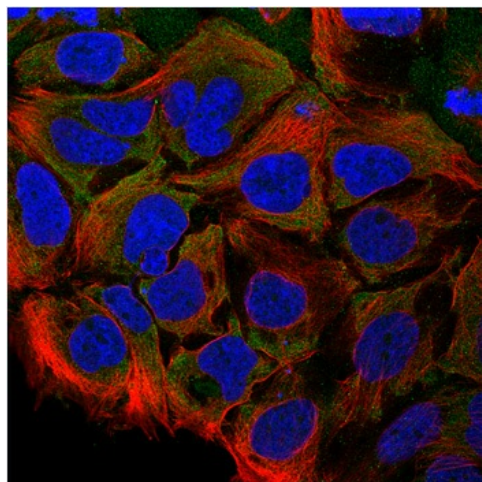
Western Blot (Reduced) using MEC / CCL28 Antibody Cat.-No AP23432PU



Western Blot (Unreduced) using MEC / CCL28 Antibody Cat.-No AP23432PU



Sandwich ELISA using MEC / CCL28 Antibody Cat.-No AP23432PU



Immunofluorescence: This antibody stained CACO-2 cells. The primary antibody was incubated at 3.0 mg/ml overnight at 4°C followed by a fluorescent labeled secondary antibody. Information and photo are courtesy of the Cell Profiling group, SciLifeLab Stockholm.