

## Product datasheet for **AP23425PU-N**

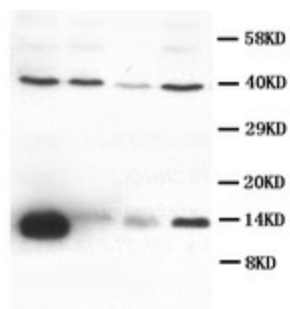
### VEGFD (101-115) Rabbit Polyclonal Antibody

#### Product data:

Product Type:	Primary Antibodies
Applications:	WB
Recommended Dilution:	Western blot: 1 µg/ml.
Reactivity:	Human
Host:	Rabbit
Isotype:	IgG
Clonality:	Polyclonal
Immunogen:	A synthetic peptide corresponding to a sequence at the middle region of human VEGFD (101-115aa), identical to the related rat sequence
Specificity:	This antibody detects VEGF-D / FIGF (101-115). No cross reactivity with other proteins.
Formulation:	5mg BSA, 0.9mg NaCl, 0.2mg Na <sub>2</sub> HPO <sub>4</sub> , 0.05mg Thimerosal, 0.05mg Na <sub>3</sub> State: Aff - Purified State: Lyophilized Ig fraction
Reconstitution Method:	0.2ml of distilled water will yield a concentration of 500 µg/ml.
Purification:	Immunogen affinity chromatography
Conjugation:	Unconjugated
Storage:	Store at 2 - 8 °C for up to one month or (in aliquots) at -20 °C for longer. Avoid repeated freezing and thawing.
Stability:	Shelf life: one year from despatch.
Gene Name:	c-fos induced growth factor
Database Link:	<a href="#">Entrez Gene 2277 Human O43915</a>
Synonyms:	FIGF, VEGF-D, FIGF
Protein Families:	Druggable Genome, Secreted Protein
Protein Pathways:	Bladder cancer, Cytokine-cytokine receptor interaction, Focal adhesion, mTOR signaling pathway, Pancreatic cancer, Pathways in cancer, Renal cell carcinoma



[View online »](#)

**Product images:**

Lane 1 : SW620 Whole Cell Lysate  
Lane 2 : Colo320 Whole Cell Lysate  
Lane 3 : 6T-CEM Whole Cell Lysate  
Lane 4 : HT1080 Whole Cell Lysate

Staining with VEGF-D Polyclonal Antibody