

Product datasheet for **AP23424PU-N**

SMAD1 (C-term) Rabbit Polyclonal Antibody

Product data:

Product Type:	Primary Antibodies
Applications:	WB
Recommended Dilution:	Western blot: 1 µg/ml.
Reactivity:	Human, Rat
Host:	Rabbit
Isotype:	IgG
Clonality:	Polyclonal
Immunogen:	A synthetic peptide corresponding to a sequence at the C-terminal of human Smad 1,2,3,5 (442-456aa), identical to the related rat sequence
Specificity:	This antibody detects SMAD1/2/3/5 (C-term, 442-456). No cross reactivity with other proteins.
Formulation:	5mg BSA, 0.9mg NaCl, 0.2mg Na ₂ HPO ₄ , 0.05mg Thimerosal, 0.05mg Na ₃ N State: Aff - Purified State: Lyophilized Ig fraction
Reconstitution Method:	0.2ml of distilled water will yield a concentration of 500µg/ml.
Purification:	Immunogen affinity purified
Conjugation:	Unconjugated
Storage:	Store at 2 - 8 °C for up to one month or (in aliquots) at -20 °C for longer. Avoid repeated freezing and thawing.
Stability:	Shelf life: one year from despatch.
Gene Name:	SMAD family member 1
Database Link:	Entrez Gene 25671 Rat Entrez Gene 4086 Human Q15797



[View online »](#)

Background:

SMADs are proteins that modulate the activity of transforming growth factor beta ligands. The SMADs, often in complex with other SMADs/CoSMAD, act as transcription factors that regulate the expression of certain genes. Zhu, H et al concluded that targeted ubiquitination of SMADs may serve to control both embryonic development and a wide variety of cellular responses to TGF-beta signals. R-Smads or receptor regulated Smads are a class of proteins that include SMAD1, SMAD2, SMAD3, SMAD5, and SMAD8. In response to signals by the TGF- β superfamily of ligands these proteins associate with receptor kinases and are phosphorylated at an SXS motif at their extreme C-terminus. These proteins then typically bind to the common mediator Smad or co-SMAD SMAD4.

Synonyms:

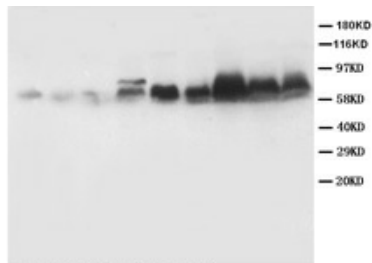
SMAD1,2,3,5, SMAD1, SMAD2, SMAD3, SMAD5

Protein Families:

Cancer stem cells, Druggable Genome, ES Cell Differentiation/IPS, Stem cell relevant signaling - JAK/STAT signaling pathway, Stem cell relevant signaling - TGF β /BMP signaling pathway, Transcription Factors

Protein Pathways:

TGF-beta signaling pathway

Product images:


Lane 1 : Rat Heart tissue Lysate
 Lane 2 : Rat skeletal muscle tissue Lysate
 Lane 3 : Rat Kidney tissue Lysate
 Lane 4 : Rat brain tissue Lysate
 Lane 5 : MM453 Whole Cell Lysate
 Lane 6 : MM231 Whole Cell Lysate
 Lane 7 : Hela Whole Cell Lysate
 Lane 8 : SMMC Whole Cell Lysate
 Lane 9 : SW620 Whole Cell Lysate

Western blot with Smad 1, 2, 3, 5 Polyclonal Antibody