

Product datasheet for **AP23419PU-N**

Caspase 8 (CASP8) Rabbit Polyclonal Antibody

Product data:

Product Type:	Primary Antibodies
Applications:	WB
Recommended Dilution:	Western blot: 1 µg/ml.
Reactivity:	Human, Mouse, Rat
Host:	Rabbit
Isotype:	IgG
Clonality:	Polyclonal
Immunogen:	Synthetic peptide corresponding to a sequence at the middle region of human Caspase-8(P18)
Specificity:	This antibody detects Caspase-8 (Middle). No cross reactivity with other proteins.
Formulation:	5mg BSA, 0.9mg NaCl, 0.2mg Na ₂ HPO ₄ , 0.05mg Thimerosal, 0.05mg Na ₃ State: Aff - Purified State: Lyophilized Ig fraction
Reconstitution Method:	0.2ml of distilled water will yield a concentration of 500µg/ml.
Purification:	Immunogen affinity purified
Conjugation:	Unconjugated
Storage:	Store at 2 - 8 °C for up to one month or (in aliquots) at -20 °C for longer. Avoid repeated freezing and thawing.
Stability:	Shelf life: one year from despatch.
Gene Name:	caspase 8
Database Link:	<u>Entrez Gene 12370 Mouse</u> <u>Entrez Gene 64044 Rat</u> <u>Entrez Gene 841 Human Q14790</u>



[View online »](#)

Background:

Caspase 8 is a caspase protein. It most likely acts upon caspase 3. This gene encodes a member of the cysteine-aspartic acid protease (caspase) family. The human CASP8 gene, whose product is also known as caspase 8 and FLICE, encodes an interleukin-1beta converting enzyme (ICE)-related cysteine protease that is activated by the engagement of several different death receptors. Caspase 8 is immediately recruited to the Fas receptor once it oligomerizes, and its protease activity is crucial for the apoptotic response generated by the resulting death-inducing signaling complex (DISC). This gene contains at least 11 exons spanning approximately 30kb on human chromosome band 2q33-34. This region of human chromosome 2 was previously reported as the location of the CASP10 gene, whose product is closely related to caspase 8.1 Caspase-8 deficiency in humans is compatible with normal development and shows that caspase-8 has a postnatal role in immune activation of naive lymphocytes.2

Synonyms:

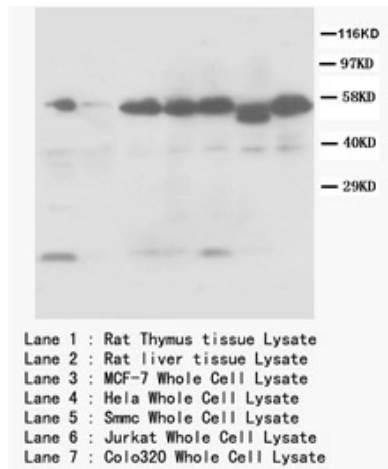
CASP-8, CASP8, MCH5, CAP4

Protein Families:

Druggable Genome, Protease

Protein Pathways:

Alzheimer's disease, Apoptosis, Huntington's disease, NOD-like receptor signaling pathway, p53 signaling pathway, Pathways in cancer, RIG-I-like receptor signaling pathway, Toll-like receptor signaling pathway, Viral myocarditis

Product images:


Western blot with Caspase-8 (P18) Polyclonal Antibody