

Product datasheet for **AP23407PU-N**

NF-κB p65 (RELA) (N-term) Rabbit Polyclonal Antibody

Product data:

Product Type:	Primary Antibodies
Applications:	WB
Recommended Dilution:	Western blot: 1 µg/ml.
Reactivity:	Human
Host:	Rabbit
Isotype:	IgG
Clonality:	Polyclonal
Immunogen:	A synthetic peptide mapping at the N-terminal of human NFκBP65
Specificity:	This antibody detects RELA / NF-κB p65. No cross reactivity with other proteins.
Formulation:	5mg BSA, 0.9mg NaCl, 0.2mg Na ₂ HPO ₄ , 0.05mg Thimerosal, 0.05mg Na ₃ N State: Aff - Purified State: Lyophilized Ig fraction
Reconstitution Method:	0.2ml of distilled water will yield a concentration of 500µg/ml.
Purification:	Immunogen affinity purified
Conjugation:	Unconjugated
Storage:	Store at 2 - 8 °C for up to one month or (in aliquots) at -20 °C for longer. Avoid repeated freezing and thawing.
Stability:	Shelf life: one year from despatch.
Gene Name:	RELA proto-oncogene, NF-κB subunit
Database Link:	Entrez Gene 5970 Human Q04206



[View online »](#)

Background:

The p65 (RELA) heterodimer is the most abundant form of NF κ B. This gene is located on 11q13, which consists of 10 exons and spans about 8.1 kb of DNA1. In rat sciatic nerves, the expression of the activated p65 subunit of NF κ B was high in the nuclei of premyelinating Schwann cells and then progressively declined until it was nearly absent in adults2. The transcriptional activity of NF-kappa-B is stimulated upon phosphorylation of its p65 subunit on serine-276 by protein kinase A (PKA). The transcriptional coactivator CBP /p300 associates with NF-kappa-B p65 through 2 sites, an N-terminal domain that interacts with the C-terminal region of unphosphorylated p65, and a second domain that only interacts with p65 phosphorylated on serine-2763.

Synonyms:

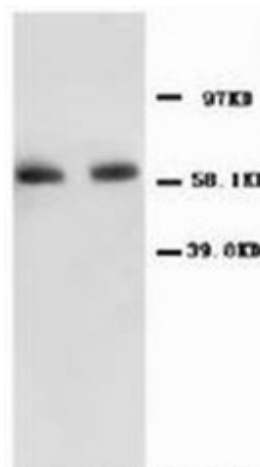
NF kappa B p65, NF κ B p65, Transcription factor p65, Rel A, NF κ B3

Protein Families:

Druggable Genome, Transcription Factors

Protein Pathways:

Acute myeloid leukemia, Adipocytokine signaling pathway, Apoptosis, B cell receptor signaling pathway, Chemokine signaling pathway, Chronic myeloid leukemia, Cytosolic DNA-sensing pathway, Epithelial cell signaling in Helicobacter pylori infection, MAPK signaling pathway, Neurotrophin signaling pathway, NOD-like receptor signaling pathway, Pancreatic cancer, Pathways in cancer, Prostate cancer, RIG-I-like receptor signaling pathway, Small cell lung cancer, T cell receptor signaling pathway, Toll-like receptor signaling pathway

Product images:

Western blot with NF κ B p65 Polyclonal Antibody