

Product datasheet for **AP23406PU-N**

SSH3BP1 (ABI1) (C-term) Rabbit Polyclonal Antibody

Product data:

Product Type:	Primary Antibodies
Applications:	IF, IHC, WB
Recommended Dilution:	Western blot: At 1-2µg/ml with the appropriate system to detect Abi-1 in cells and tissues. Immunohistochemistry on paraffin sections: At 0.5-1µg/ml to detect Abi-1 in formalin fixed and paraffin embedded tissues. Immunohistochemistry on frozen sections: At 0.5-1µg/ml to detect Abi-1 in formalin or acetone fixed tissues. Immunocytochemistry: At 0.5-1µg/ml to detect Abi-1 in acetone fixed cell. Antigen retrieval by Pepsin and Trypsin is required.
Reactivity:	Human, Mouse, Rat
Host:	Rabbit
Isotype:	IgG
Clonality:	Polyclonal
Immunogen:	A synthetic peptide corresponding to a sequence at the C-terminal of human ABI-1
Specificity:	This antibody detects ABI1 / SSH3BP1 (C-term).
Formulation:	5mg BSA, 0.9mg NaCl, 0.2mg Na ₂ HPO ₄ , 0.05mg Thimerosal, 0.05mg Na ₃ State: Aff - Purified State: Lyophilized Ig fraction
Reconstitution Method:	0.2ml of distilled water will yield a concentration of 500µg/ml.
Purification:	Immunogen affinity purified
Conjugation:	Unconjugated
Storage:	Store at 2 - 8 °C for up to one month or (in aliquots) at -20 °C for longer. Avoid repeated freezing and thawing.
Stability:	Shelf life: one year from despatch.
Gene Name:	abl interactor 1
Database Link:	Entrez Gene 11308 Mouse Entrez Gene 79249 Rat Entrez Gene 10006 Human Q8IZP0



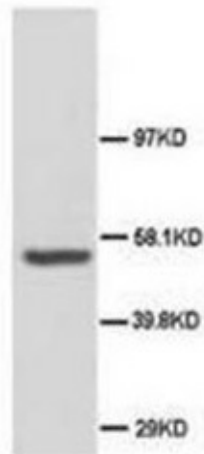
[View online »](#)

Background:

ABI1 is a human homolog of mouse Abl-interactor-1 (Abi1), mapped on 10p11.2. ABI1 participate in the transduction of signals from Ras to Rac by regulating Rac-specific guanine nucleotide exchange factor (GEF) activities. ABI1 dramatically promoted ABL1-mediated tyrosine phosphorylation of MENA, but not of other substrates. Abi-1 regulates c-Abl-mediated phosphorylation of Mena by interacting with both proteins. ABI1 plays a role in the leukemogenesis by translocating to MLL.

Synonyms:

Abl interactor 1, Abelson interactor 1, Abi-1, e3B1, Spectrin binding protein, Nap1-binding protein, Abl-binding protein 4, AblBP4

Product images:

Western blot analysis of rat brain tissue lysis using ABI-1 antibody