

Product datasheet for **AP23398PU-N**

Phospholamban (PLN) (N-term) Rabbit Polyclonal Antibody

Product data:

Product Type:	Primary Antibodies
Applications:	WB
Recommended Dilution:	Western blot: 1 µg/ml.
Reactivity:	Human, Mouse, Rat
Host:	Rabbit
Isotype:	IgG
Clonality:	Polyclonal
Immunogen:	A synthetic peptide corresponding to a sequence at the N-terminal of human Phospholamban
Specificity:	This antibody detects Phospholamban (N-term). No cross reactivity with other proteins.
Formulation:	5mg BSA, 0.9mg NaCl, 0.2mg Na ₂ HPO ₄ , 0.05mg Thimerosal, 0.05mg Na ₃ State: Aff - Purified State: Lyophilized Ig fraction
Reconstitution Method:	0.2ml of distilled water will yield a concentration of 500µg/ml.
Purification:	Immunogen affinity purified
Conjugation:	Unconjugated
Storage:	Store at 2 - 8 °C for up to one month or (in aliquots) at -20 °C for longer. Avoid repeated freezing and thawing.
Stability:	Shelf life: one year from despatch.
Gene Name:	phospholamban
Database Link:	<u>Entrez Gene 18821 Mouse</u> <u>Entrez Gene 64672 Rat</u> <u>Entrez Gene 5350 Human P26678</u>



[View online »](#)

Background:

Phospholamban is a 52 amino acid integral membrane protein that regulates the Ca²⁺ pump in cardiac muscle and skeletal muscle cells. The subsequent activation of the Ca(2+) pump leads to enhanced muscle relaxation rates, thereby contributing to the inotropic response elicited in heart by beta-agonists. Phospholamban is also expressed in slow-twitch skeletal muscle and some smooth muscle cells. McTiernan et al. (1999) observed that human ventricle and quadriceps displayed high levels of phospholamban transcripts and proteins, with markedly lower expression observed in smooth muscles, while the right atrium also expressed low levels of phospholamban. The structure of the human phospholamban gene closely resembles that reported for chicken, rabbit, rat, and mouse. Comparison of the human to other mammalian phospholamban genes indicated a marked conservation of sequence for at least 217 bp upstream of the transcription start site.

Synonyms:

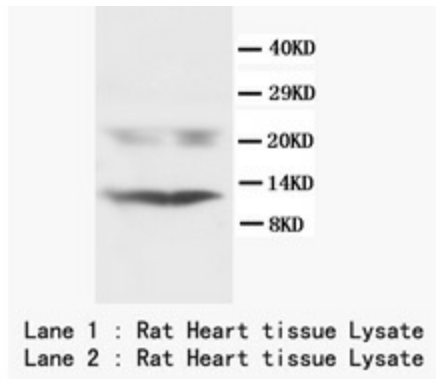
Cardiac phospholamban, PLB, PLN

Protein Families:

Transmembrane

Protein Pathways:

Calcium signaling pathway, Dilated cardiomyopathy

Product images:

Western blot with Phospholamban Polyclonal Antibody