

Product datasheet for **AP23394PU-N**

LPL (C-term) Rabbit Polyclonal Antibody

Product data:

Product Type:	Primary Antibodies
Applications:	WB
Recommended Dilution:	Western blot: 1 µg/ml (Bovine).
Reactivity:	Bovine, Human
Host:	Rabbit
Isotype:	IgG
Clonality:	Polyclonal
Immunogen:	A synthetic peptide corresponding to a sequence at the C-terminal of human LPL
Specificity:	This antibody detects Lipoprotein lipase (C-term). No cross reactivity with other proteins.
Formulation:	5mg BSA, 0.9mg NaCl, 0.2mg Na ₂ HPO ₄ , 0.05mg Thimerosal, 0.05mg Na ₃ N State: Aff - Purified State: Lyophilized Ig fraction
Reconstitution Method:	0.2ml of distilled water will yield a concentration of 500µg/ml.
Purification:	Immunogen affinity purified
Conjugation:	Unconjugated
Storage:	Store at 2 - 8 °C for up to one month or (in aliquots) at -20 °C for longer. Avoid repeated freezing and thawing.
Stability:	Shelf life: one year from despatch.
Database Link:	Entrez Gene 280843 Bovine P11151



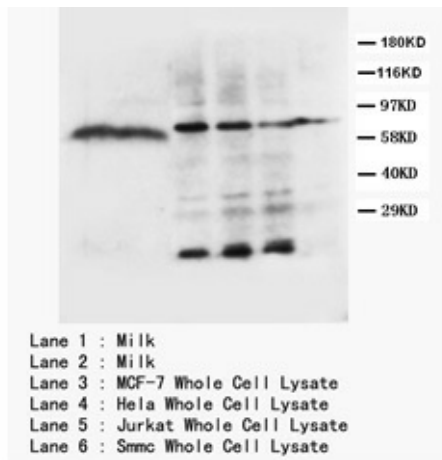
[View online »](#)

Background:

Lipoprotein lipase (LPL) is the central enzyme in plasma triglyceride hydrolysis and is secreted by macrophages in the subendothelial space. Evidence has been provided that LPL produced by macrophages in the vessel wall exerts proatherogenic effects. Lipoprotein lipase has been difficult to purify, and its protein sequence remained undetermined until it could be deduced from the nucleotide sequence of its cDNA. The gene encodes a protein of 475 amino acids that becomes a mature protein of 448 residues after cleavage of a signal peptide. Analysis of the sequence indicated that human lipoprotein lipase, hepatic lipase, and pancreatic lipase are members of a gene family. The atherogenic effects of LPL have been mainly attributed to its ability to favor lipid accumulation within macrophages present in the atherosclerotic lesion.

Synonyms:

LPL, LIPD, EC=3.1.1.34

Product images:

Western blot with LPL Polyclonal Antibody