

## Product datasheet for **AP23392PU-N**

### APAF1 (N-term) Rabbit Polyclonal Antibody

#### Product data:

Product Type:	Primary Antibodies
Applications:	IHC, WB
Recommended Dilution:	Western blot: 1 µg/ml. Immunohistochemistry on paraffin sections 2 µg/ml.
Reactivity:	Human, Mouse, Rat
Host:	Rabbit
Isotype:	IgG
Clonality:	Polyclonal
Immunogen:	A synthetic peptide corresponding to a sequence at the N-terminal of human APAF1
Specificity:	This antibody detects APAF1 (N-term). No cross reactivity with other proteins.
Formulation:	5mg BSA, 0.9mg NaCl, 0.2mg Na <sub>2</sub> HPO <sub>4</sub> , 0.05mg Thimerosal, 0.05mg Na <sub>3</sub> State: Aff - Purified State: Lyophilized Ig fraction
Reconstitution Method:	0.2ml of distilled water will yield a concentration of 500µg/ml.
Purification:	Immunogen affinity purified
Conjugation:	Unconjugated
Storage:	Store at 2 - 8 °C for up to one month or (in aliquots) at -20 °C for longer. Avoid repeated freezing and thawing.
Stability:	Shelf life: one year from despatch.
Gene Name:	apoptotic peptidase activating factor 1
Database Link:	<a href="#">Entrez Gene 11783 Mouse</a> <a href="#">Entrez Gene 78963 Rat</a> <a href="#">Entrez Gene 317 Human</a> <a href="#">O14727</a>



[View online »](#)

**Background:**

Apoptotic peptidase activating factor 1, also known as APAF1, is a protein which in humans is encoded by the APAF1 gene. This gene is mapped to chromosome 12q23.1 It encodes a cytoplasmic protein that initiates apoptosis. And it is an essential downstream effector of p53-mediated apoptosis.<sup>2</sup> This protein contains several copies of the WD40 repeat domain, a caspase recruitment domain (CARD), and an ATPase domain (NB-ARC). In the presence of cytochrome c and dATP, APAF1 assembles into an oligomeric apoptosome, which is responsible for activation of procaspase-9 and maintenance of the enzymatic activity of processed caspase-9.<sup>3</sup> Furthermore, APAF1 is inactivated in metastatic melanomas, leading to defects in the execution of apoptotic cell death.<sup>4</sup> Additionally, APAF1 has been shown to interact with NLRP1,<sup>5</sup> Caspase-9,<sup>5, 6, 7, 8, 9, 10</sup> AIP1,<sup>6</sup> BCL2-like 18,<sup>9</sup> and HSPA4.<sup>10</sup>

**Synonyms:**

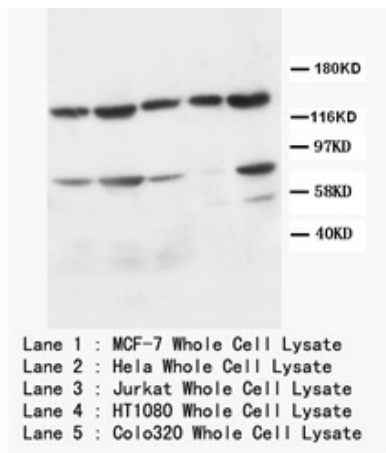
Apaf-1, KIAA0413

**Protein Families:**

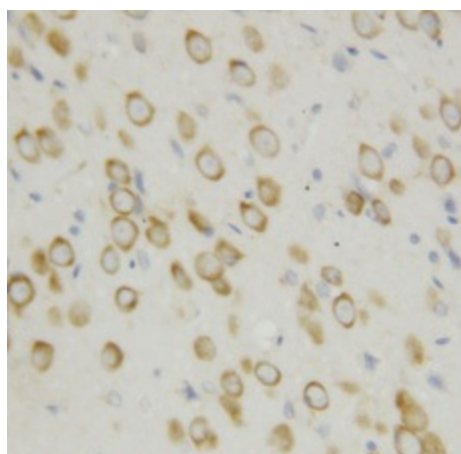
Druggable Genome

**Protein Pathways:**

Alzheimer's disease, Amyotrophic lateral sclerosis (ALS), Apoptosis, Huntington's disease, p53 signaling pathway, Parkinson's disease, Small cell lung cancer

**Product images:**

Western blot with APAF1 Polyclonal Antibody



Immunohistochemistry with APAF1 Polyclonal Antibody