

Product datasheet for **AP23389PU-N**

LXR alpha (NR1H3) (C-term) Rabbit Polyclonal Antibody

Product data:

Product Type:	Primary Antibodies
Applications:	WB
Recommended Dilution:	Western blot: 1 µg/ml.
Reactivity:	Human, Mouse, Rat
Host:	Rabbit
Isotype:	IgG
Clonality:	Polyclonal
Immunogen:	A synthetic peptide corresponding to a sequence at the C-terminal of human LXR α , identical to the related rat and mouse sequence.
Specificity:	This antibody detects NR1H3 (C-term). No cross reactivity with other proteins.
Formulation:	5mg BSA, 0.9mg NaCl, 0.2mg Na ₂ HPO ₄ , 0.05mg Thimerosal, 0.05mg Na ₃ State: Aff - Purified State: Lyophilized Ig fraction
Reconstitution Method:	0.2ml of distilled water will yield a concentration of 500µg/ml.
Purification:	Immunogen affinity purified
Conjugation:	Unconjugated
Storage:	Store at 2 - 8 °C for up to one month or (in aliquots) at -20 °C for longer. Avoid repeated freezing and thawing.
Stability:	Shelf life: one year from despatch.
Gene Name:	nuclear receptor subfamily 1 group H member 3
Database Link:	<u>Entrez Gene 22259 Mouse</u> <u>Entrez Gene 58852 Rat</u> <u>Entrez Gene 10062 Human Q13133</u>



[View online »](#)

Background:

LXRA is a tissue-specific cofactor that permits RXRA to function as a potent 9cRA receptor with a distinct target gene specificity. It specifically interacts with RXRA in vivo to form a functional heterodimer in which RXRA is the ligand-binding subunit. Additionally, LXR activity is critical for physiologic lipid metabolism and transport. LXRs are endogenous inhibitors of atherogenesis and are targets for therapeutic intervention in cardiovascular disease. Furthermore, LXRs and their ligands are negative regulators of macrophage inflammatory gene expression. LXR is also found that as a transcriptional switch that integrates hepatic glucose metabolism and fatty acid synthesis. The LXR-IDOL-LDLR axis defines a complementary pathway to sterol response element-binding proteins for sterol regulation of cholesterol uptake.

Synonyms:

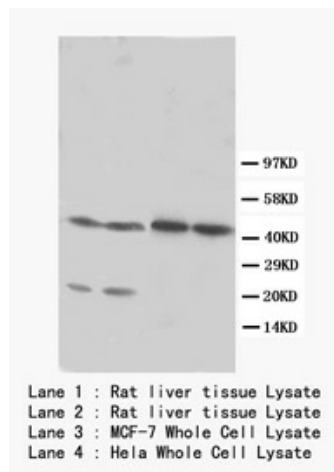
LXRA

Protein Families:

Druggable Genome, Nuclear Hormone Receptor, Transcription Factors

Protein Pathways:

PPAR signaling pathway

Product images:

Western blot with LXRA Polyclonal Antibody