

Product datasheet for **AP23387PU-N**

Bcl x (BCL2L1) (Bcl-xS) Rabbit Polyclonal Antibody

Product data:

Product Type:	Primary Antibodies
Applications:	IHC, WB
Recommended Dilution:	Western blot: 1 µg/ml. Immunohistochemistry on paraffin sections: 2 µg/ml.
Reactivity:	Human, Mouse, Rat
Host:	Rabbit
Isotype:	IgG
Clonality:	Polyclonal
Immunogen:	A synthetic peptide corresponding to a sequence at the middle region of human Bcl-x/s
Specificity:	This antibody detects Bcl-2-like 1 Bcl-xS (Mid-region). No cross reactivity with other proteins.
Formulation:	5mg BSA, 0.9mg NaCl, 0.2mg Na ₂ HPO ₄ , 0.05mg Thimerosal, 0.05mg NaN ₃ State: Aff - Purified State: Lyophilized Ig fraction
Reconstitution Method:	0.2ml of distilled water will yield a concentration of 500µg/ml.
Purification:	Immunogen affinity purified
Conjugation:	Unconjugated
Storage:	Store at 2 - 8 °C for up to one month or (in aliquots) at -20 °C for longer. Avoid repeated freezing and thawing.
Stability:	Shelf life: one year from despatch.
Gene Name:	BCL2 like 1
Database Link:	Entrez Gene 12048 Mouse Entrez Gene 24888 Rat Entrez Gene 598 Human Q07817
Background:	Bcl-xS is the second mRNA species of Bcl-x protein, which encodes a protein that inhibits the ability of bcl-2 to enhance the survival of growth factor-deprived cells. In vivo, bcl-xS mRNA is expressed at high levels in cells that undergo a high rate of turnover, such as developing lymphocytes. ¹ Apoptosis was associated with increased protein expression of Bcl-X/S, an early marker of apoptosis, and release of cytochrome c into the cytosol of infected HB cells.
Synonyms:	Bcl2-L-1, BCL2L1, BCL2L, BCLX, Bcl-x, bcl-xL, bcl-xS, Bcl-2-like protein 1

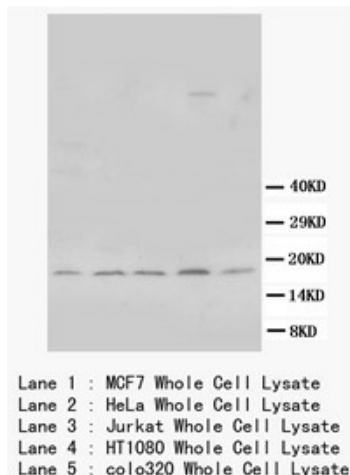


[View online »](#)

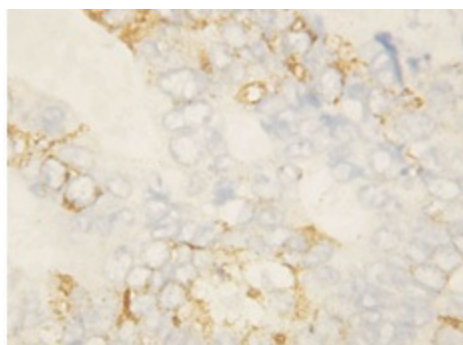
Protein Families: Druggable Genome, ES Cell Differentiation/IPS, Transmembrane

Protein Pathways: Amyotrophic lateral sclerosis (ALS), Apoptosis, Chronic myeloid leukemia, Jak-STAT signaling pathway, Pancreatic cancer, Pathways in cancer, Small cell lung cancer

Product images:



Western blot with Bcl-x/s Polyclonal Antibody



immunohistochemistry with Bcl-x/s Polyclonal Antibody