

Product datasheet for **AP23386PU-N**

SCYL1BP1 (GORAB) Rabbit Polyclonal Antibody

Product data:

Product Type:	Primary Antibodies
Applications:	IHC, WB
Recommended Dilution:	Western blot: 0.5-1 µg/ml with the appropriate system to detect NTKLBP1 in cells and tissues. Immunohistochemistry on paraffin sections: At 1-2 µg/ml to detect NTKLBP1 in formalin fixed and paraffin sections.
Reactivity:	Human, Mouse, Rat
Host:	Rabbit
Isotype:	IgG
Clonality:	Polyclonal
Immunogen:	A synthetic peptide corresponding to a sequence at the middle region of human NTKLBP1
Specificity:	This antibody detects GORAB. No cross reactivity with other proteins.
Formulation:	5mg BSA, 0.9mg NaCl, 0.2mg Na ₂ HPO ₄ , 0.05mg Thimerosal, 0.05mg NaN ₃ State: Aff - Purified State: Lyophilized Ig fraction
Reconstitution Method:	0.2ml of distilled water will yield a concentration of 500 µg/ml.
Purification:	Immunogen affinity purified
Conjugation:	Unconjugated
Storage:	Store at 2 - 8 °C for up to one month or (in aliquots) at -20 °C for longer. Avoid repeated freezing and thawing.
Stability:	Shelf life: one year from despatch.
Gene Name:	golgin, RAB6 interacting
Database Link:	Entrez Gene 98376 Mouse Entrez Gene 304923 Rat Entrez Gene 92344 Human Q5T7V8



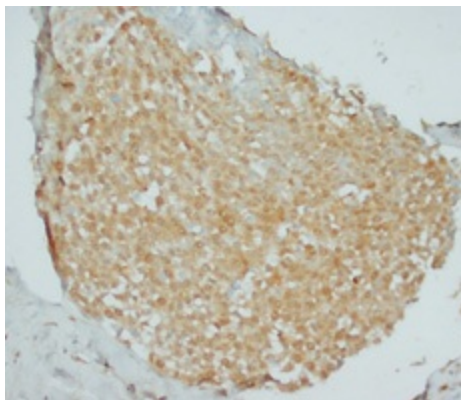
[View online »](#)

Background:

NTKL-BP1 is an evolutionarily conserved protein, and the full-length cDNA sequence of the NTKL-BP1 gene consists of 2,537 bp, which encode 368 amino acids. Its homologues exist in different organisms, including *Arabidopsis thaliana*, *Drosophila melanogaster*, *Plasmodium falciparum*, *Geobacter metallireducens*, *Anopheles gambiae* and human. The expression of NTKL-BP1 was observed in multiple normal mouse tissues. Moreover, immunofluorescent staining indicated that NTKL and NTKL-BP1 were all localized in the cytoplasm.

Synonyms:

NTKLBP1, SCYL1BP1, RAB6-interacting golgin

Product images:


Immunohistochemistry with NTKLBP1 Polyclonal Antibody