

Product datasheet for **AP23378PU-N**

RUNX2 (C-term) Rabbit Polyclonal Antibody

Product data:

Product Type:	Primary Antibodies
Applications:	IHC, WB
Recommended Dilution:	Western blot: 1 µg/ml. Immunohistochemistry on paraffin sections 1-2 µg/ml.
Reactivity:	Human, Mouse, Rat
Host:	Rabbit
Isotype:	IgG
Clonality:	Polyclonal
Immunogen:	Synthetic peptide corresponding to a sequence at the C-terminal of human CBFA1
Specificity:	This antibody detects RUNX2 (C-term). No cross reactivity with other proteins.
Formulation:	5mg BSA, 0.9mg NaCl, 0.2mg Na ₂ HPO ₄ , 0.05mg Thimerosal, 0.05mg Na ₃ N State: Aff - Purified State: Lyophilized Ig fraction
Reconstitution Method:	0.2ml of distilled water will yield a concentration of 500µg/ml.
Purification:	Immunogen affinity purified
Conjugation:	Unconjugated
Storage:	Store at 2 - 8 °C for up to one month or (in aliquots) at -20 °C for longer. Avoid repeated freezing and thawing.
Stability:	Shelf life: one year from despatch.
Gene Name:	runt related transcription factor 2
Database Link:	Entrez Gene 12393 Mouse Entrez Gene 367218 Rat Entrez Gene 860 Human Q13950



[View online »](#)

Background:

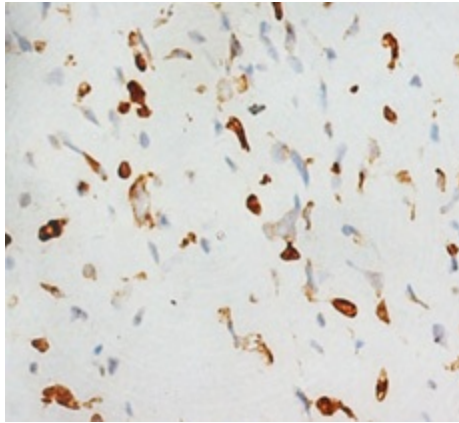
Core binding factor A1 (CBFA1/RUNX2) is a runt-like transcription factor essential for osteoblast differentiation. This protein is a member of the RUNX family of transcription factors and has a Runt DNA-binding domain. It is essential for osteoblastic differentiation and skeletal morphogenesis and acts as a scaffold for nucleic acids and regulatory factors involved in skeletal gene expression. D'Souza et al.(1999) indicate a non-redundant role for Cbfa1 in tooth development that may be distinct from that in bone formation. In odontogenesis, Cbfa1 is not involved in the early signaling networks regulating tooth initiation and early morphogenesis but regulates key epithelial-mesenchymal interactions that control advancing morphogenesis and histodifferentiation of the epithelial enamel organ.

Synonyms:

Runt-related transcription factor 2, Acute myeloid leukemia 3 protein, AML3, AML-3, CBFA1, OSF2, OSF-2, PEBP2A, PEA2-alpha A, PEBP2-alpha A

Protein Families:

Druggable Genome, Transcription Factors

Product images:

Immunohistochemistry with CBFA1 Polyclonal Antibody