

Product datasheet for **AP23373PU-N**

Cytochrome C (CYCS) (C-term) Rabbit Polyclonal Antibody

Product data:

Product Type:	Primary Antibodies
Applications:	IF, IHC, WB
Recommended Dilution:	Western blot: At 0.1-0.5 µg/ml with the appropriate system to detect Cytochrome C in cells and tissues. Immunohistochemistry on Paraffin Sections: At 0.5-1 µg/ml to detect Cytochrome C in formalin fixed and paraffin embedded tissues. Immunohistochemistry on Frozen Sections: At 0.5-1 µg/ml to detect Cytochrome C in formalin or acetone fixed tissues. Immunocytochemistry: 1 µg/ml.
Reactivity:	Human, Mouse, Rat
Host:	Rabbit
Isotype:	IgG
Clonality:	Polyclonal
Immunogen:	Synthetic peptide corresponding to a sequence at the C-terminal of human Cytochrome C
Specificity:	This antibody detects Cytochrome c (C-term, 91-105). No cross reactivity with other proteins.
Formulation:	0.9mg NaCl, 0.2mg Na ₂ HPO ₄ State: Aff - Purified State: Lyophilized Ig fraction Stabilizer: 5mg BSA Preservative: 0.05mg Thimerosal, 0.05mg Sodium Azide
Reconstitution Method:	0.2ml of distilled water will yield a concentration of 500µg/ml.
Purification:	Immunogen affinity purified
Conjugation:	Unconjugated
Storage:	Store undiluted at 2-8°C for one month or (in aliquots) at -20°C for longer. Avoid repeated freezing and thawing.
Stability:	Shelf life: one year from despatch.
Gene Name:	cytochrome c, somatic



[View online »](#)

Database Link: [Entrez Gene 13063 Mouse](#)[Entrez Gene 25309 Rat](#)[Entrez Gene 54205 Human](#)
[P99999](#)

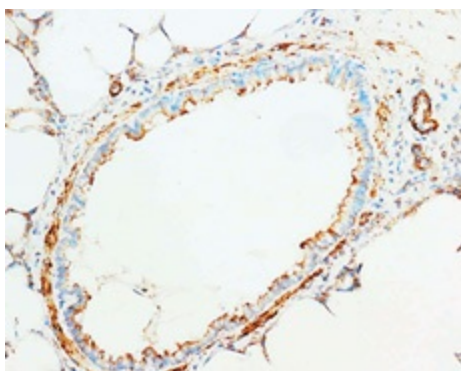
Background: Cytochrome C is located in the mitochondria of all aerobic cells and is involved in the electron transport system. Human cytochrome c has 104 amino acid residues and a molecular weight of 11,458 and is mapped to 7p15.2. Cytochrome c released from mitochondria has been proposed to be an essential component of an apoptotic pathway responsive to DNA damage and other forms of cell stress. And it has a role in different apoptotic signaling cascades.

Synonyms: CYCS, CYC

Protein Families: Druggable Genome

Protein Pathways: Alzheimer's disease, Amyotrophic lateral sclerosis (ALS), Apoptosis, Colorectal cancer, Huntington's disease, p53 signaling pathway, Parkinson's disease, Pathways in cancer, Small cell lung cancer, Viral myocarditis

Product images:



Paraffin Rat Lung Tissue stained with Cytochrome C Polyclonal Antibody