

Product datasheet for **AP23370PU-N**

SOCS1 (C-term) Rabbit Polyclonal Antibody

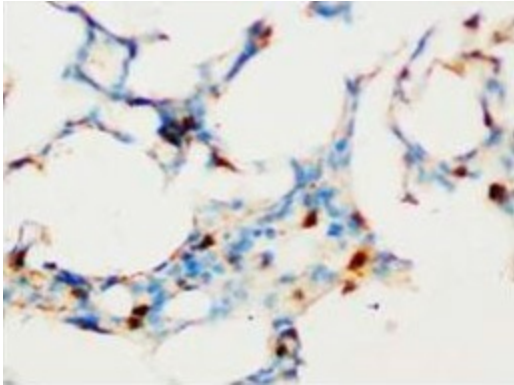
Product data:

Product Type:	Primary Antibodies
Applications:	IF, IHC, WB
Recommended Dilution:	Western blot: At 0.1-0.5 µg/ml with the appropriate system to detect SOCS1 in cells and tissues. Immunohistochemistry on paraffin sections: At 0.5-1 µg/ml to detect SOCS1 in formalin fixed and paraffin embedded tissues. Immunocytochemistry.
Reactivity:	Human, Mouse, Rat
Host:	Rabbit
Isotype:	IgG
Clonality:	Polyclonal
Immunogen:	A synthetic peptide corresponding to a sequence at the C-terminal of human SOCS1
Specificity:	This antibody detects SOCS1 / JAB (C-term). No cross reactivity with other proteins.
Formulation:	5mg BSA, 0.9mg NaCl, 0.2mg Na ₂ HPO ₄ , 0.05mg Thimerosal, 0.05mg Na ₃ State: Aff - Purified State: Lyophilized Ig fraction
Reconstitution Method:	0.2ml of distilled water will yield a concentration of 500µg/ml.
Purification:	Immunogen affinity purified
Conjugation:	Unconjugated
Storage:	Store at 2 - 8 °C for up to one month or (in aliquots) at -20 °C for longer. Avoid repeated freezing and thawing.
Stability:	Shelf life: one year from despatch.
Gene Name:	suppressor of cytokine signaling 1
Database Link:	Entrez Gene 12703 Mouse Entrez Gene 252971 Rat Entrez Gene 8651 Human O15524



[View online »](#)

Background:	Suppressor of cytokine signaling 1 (SOCS1), also known as Jak-binding protein (JAB), is a negative regulator to a subset of protein-tyrosine kinases. This 211-amino acid protein has a molecular mass of about 23.5 kD. The TEC-binding region of SOCS1 resides in the N terminus. SOCS1 associates with Tec and suppresses its kinase activity. The SOCS1 gene is intronless and is mapped to on chromosome 16p13.13. SOCS1 regulates the JAK/STAT signal-transduction pathway. Moreover, it contributes to protection against hepatic injury and fibrosis, and may also protect against hepatocarcinogenesis.
Synonyms:	Suppressor of cytokine signaling 1, SOCS-1, SSI1, SSI-1, TIP3, TIP-3, JAB
Protein Families:	Druggable Genome, Stem cell - Pluripotency, Stem cell relevant signaling - JAK/STAT signaling pathway
Protein Pathways:	Insulin signaling pathway, Jak-STAT signaling pathway, Type II diabetes mellitus, Ubiquitin mediated proteolysis

Product images:

Immunohistochemical analysis of paraffin-embedded rat tissue sections (lung), staining SOCS1 in nucleus, DAB chromogenic reaction