

## Product datasheet for **AP23366PU-N**

### PP2A-alpha (PPP2CA) (N-term) Rabbit Polyclonal Antibody

#### Product data:

Product Type:	Primary Antibodies
Applications:	IF, IHC, WB
Recommended Dilution:	Western blot: At 1-2µg/ml with the appropriate system to detect PP2A in cells and tissues. Immunohistochemistry on paraffin sections: At 1-2µg/ml to detect PP2A in formalin fixed and paraffin embedded tissues. Boiling the sections is required. Immunocytochemistry: At 0.5-1µg/ml to detect PP2A in acetone fixed cell. Antigen retrieval by Pepsin and Trypsin is required.
Reactivity:	Human, Mouse, Rat
Host:	Rabbit
Isotype:	IgG
Clonality:	Polyclonal
Immunogen:	Synthetic peptide corresponding to a sequence mapping near the N-terminal of human PP2A
Specificity:	This antibody detects PPP2CA at N-term. No cross reactivity with other proteins.
Formulation:	5mg BSA, 0.9mg NaCl, 0.2mg Na <sub>2</sub> HPO <sub>4</sub> , 0.05mg Thimerosal, 0.05mg Na <sub>3</sub> State: Aff - Purified State: Lyophilized Ig fraction
Reconstitution Method:	0.2ml of distilled water will yield a concentration of 500µg/ml.
Purification:	Immunogen affinity purified
Conjugation:	Unconjugated
Storage:	Store at 2 - 8 °C for up to one month or (in aliquots) at -20 °C for longer. Avoid repeated freezing and thawing.
Stability:	Shelf life: one year from despatch.
Gene Name:	protein phosphatase 2 catalytic subunit alpha
Database Link:	<a href="#">Entrez Gene 19052 Mouse</a> <a href="#">Entrez Gene 24672 Rat</a> <a href="#">Entrez Gene 5515 Human P67775</a>



[View online »](#)

**Background:**

The catalytic subunit of human protein phosphatase 2A (PPP2CA) encodes a 309-amino acid polypeptide. It is localized to chromosome 5. The gene (approximately 30 kbp) is composed of seven exons and six introns. It is predicted to be important for phosphatase enzymatic activity. Methylation of the C-terminal leucine residue (Leu309) of protein serine/threonine phosphatase 2A catalytic subunit (PP2AC) is known to regulate catalytic activity in vitro. Furthermore, PP2A has a fundamental role in cardiac function, and suggests that disturbances in protein phosphatase expression and activity may cause or exacerbate the course of cardiac diseases.

**Synonyms:**

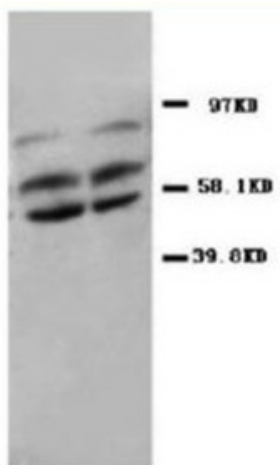
Protein Phosphatase 2A, PP2A-alpha, Replication protein C

**Protein Families:**

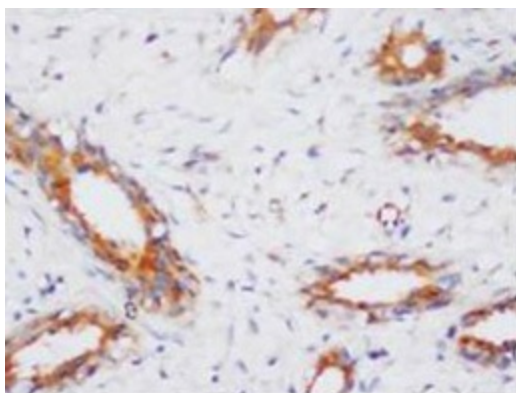
Druggable Genome, Phosphatase, Transcription Factors

**Protein Pathways:**

Long-term depression, Oocyte meiosis, TGF-beta signaling pathway, Tight junction, Wnt signaling pathway

**Product images:**

Western blot analysis of rat kidney tissue lysis using PP2A antibody



Immunohistochemical analysis of paraffin-embedded cancer sections, staining PP2A in cytoplasm, DAB chromogenic reaction