

## Product datasheet for **AP23362PU-N**

### Aquaporin 1 (AQP1) (C-term) Rabbit Polyclonal Antibody

#### Product data:

Product Type:	Primary Antibodies
Applications:	IHC, WB
Recommended Dilution:	Western blot: At 0.1-0.5 µg/ml with the appropriate system to detect AQP1 in cells and tissues. Immunohistochemistry on paraffin sections: At 0.5-1.0 µg/ml to detect AQP1 in formalin fixed and paraffin embedded tissues.
Reactivity:	Human, Mouse, Rat
Host:	Rabbit
Isotype:	IgG
Clonality:	Polyclonal
Immunogen:	Synthetic peptide corresponding to a sequence mapping near the C-terminal of human AQP1
Specificity:	This antibody detects Aquaporin-1 (C-term). No cross reactivity with other proteins.
Formulation:	5mg BSA, 0.9mg NaCl, 0.2mg Na <sub>2</sub> HPO <sub>4</sub> , 0.05mg Thimerosal, 0.05mg Na <sub>3</sub> State: Aff - Purified State: Lyophilized Ig fraction
Reconstitution Method:	0.2ml of distilled water will yield a concentration of 500µg/ml.
Concentration:	lot specific
Purification:	Immunogen affinity purified
Conjugation:	Unconjugated
Storage:	Store at 2 - 8 °C for up to one month or (in aliquots) at -20 °C for longer. Avoid repeated freezing and thawing.
Stability:	Shelf life: one year from despatch.
Gene Name:	aquaporin 1 (Colton blood group)
Database Link:	<a href="#">Entrez Gene 11826 Mouse</a> <a href="#">Entrez Gene 25240 Rat</a> <a href="#">Entrez Gene 358 Human P29972</a>



[View online »](#)

**Background:**

Aquaporin 1 is a 28-kD integral protein thought at first to be a breakdown product of the Rh polypeptide but was later shown to be a unique molecule that is abundant in erythrocytes and renal tubules. AQP1 is also expressed by the choroid plexus and various other tissues. It forms a water-specific channel that provides the plasma membranes of red cells and kidney proximal tubules with high permeability to water, thereby permitting water to move in the direction of an osmotic gradient.

**Synonyms:**

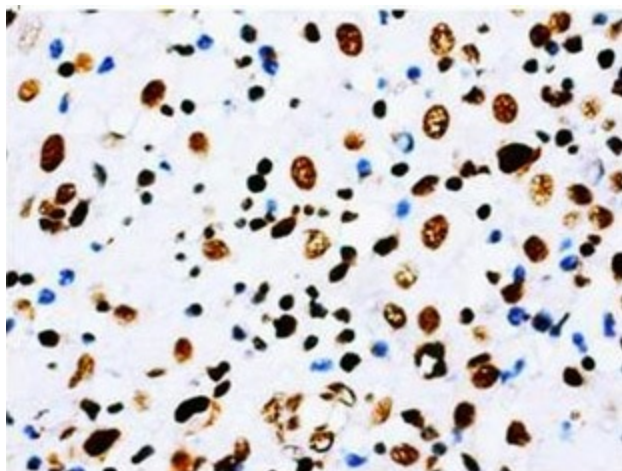
AQP-1, CHIP28, Aquaporin-CHIP

**Protein Families:**

Druggable Genome, Ion Channels: Other, Transmembrane

**Product images:**

Western blot analysis of rat tissue sections (kidney) lysis using AQP1 antibody



Immunohistochemical analysis of paraffin embedded mammary cancer sections, staining AQP1 in cytoplasm, DAB chromogenic reaction