

## Product datasheet for **AP23360PU-N**

### Morg1 (WDR83) (N-term) Rabbit Polyclonal Antibody

#### Product data:

Product Type:	Primary Antibodies
Applications:	IF, IHC, WB
Recommended Dilution:	Western blot: At 1 µg/ml with the appropriate system to detect MORG1 in cells and tissues. Immunohistochemistry on paraffin sections: At 0.5-1 µg/ml to detect MORG1 in formalin fixed and paraffin embedded tissues. Immunocytochemistry.
Reactivity:	Human, Mouse, Rat
Host:	Rabbit
Isotype:	IgG
Clonality:	Polyclonal
Immunogen:	Synthetic peptide corresponding to a sequence near the N-terminal of human MORG1
Specificity:	This antibody MORG1 detects (N-term). No cross reactivity with other proteins.
Formulation:	5mg BSA, 0.9mg NaCl, 0.2mg Na <sub>2</sub> HPO <sub>4</sub> , 0.05mg Thimerosal, 0.05mg NaN <sub>3</sub> State: Aff - Purified State: Lyophilized Ig fraction
Reconstitution Method:	0.2ml of distilled water will yield a concentration of 500 µg/ml.
Purification:	Immunogen affinity purified
Conjugation:	Unconjugated
Storage:	Store at 2 - 8 °C for up to one month or (in aliquots) at -20 °C for longer. Avoid repeated freezing and thawing.
Stability:	Shelf life: one year from despatch.
Gene Name:	WD repeat domain 83
Database Link:	<a href="#">Entrez Gene 67836 Mouse</a> <a href="#">Entrez Gene 288924 Rat</a> <a href="#">Entrez Gene 84292 Human</a> <a href="#">Q9BRX9</a>



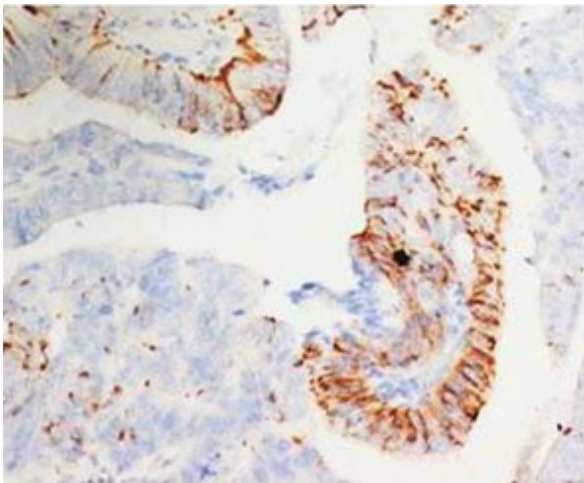
[View online »](#)

**Background:**

MORG1 (mitogen-activated protein kinase organizer 1), a member of the WD-40 protein family that was isolated as a binding partner of the extracellular signal-regulated kinase (ERK) pathway scaffold protein MP1. MORG1 specifically associates with several components of the ERK pathway, including MP1, Raf-1, MEK, and ERK, and stabilizes their assembly into an oligomeric complex. MORG1 facilitates ERK activation when cells are stimulated with lysophosphatidic acid, phorbol 12-myristate 13-acetate, or serum, but not in response to epidermal growth factor. Suppression of MORG1 by short interfering RNA leads to a marked reduction in ERK activity when cells are stimulated with serum. MORG1 is a component of a modular scaffold system that participates in the regulation of agonist-specific ERK signaling.

**Synonyms:**

MAPK organizer 1, MGC4238

**Product images:**


Immunohistochemical analysis of paraffin-embedded mammary cancer sections, staining MORG1 in cytoplasm, DAB staining