

## Product datasheet for **AP23358PU-N**

### TIMP2 (C-term) Rabbit Polyclonal Antibody

#### Product data:

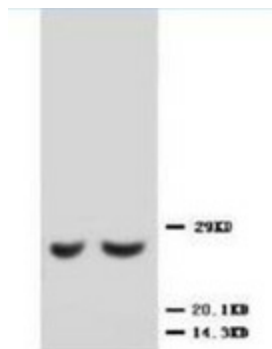
Product Type:	Primary Antibodies
Applications:	WB
Recommended Dilution:	Western blot: At 1-2µg/ml with the appropriate system to detect TIMP-2 in cells and tissues.
Reactivity:	Human, Mouse, Rat
Host:	Rabbit
Isotype:	IgG
Clonality:	Polyclonal
Immunogen:	Peptide mapping at the C-terminal end of TIMP-2 of human origin
Specificity:	This antibody detects TIMP2 (C-term).
Formulation:	50% glycerol, 0.9mg NaCl, 0.2mg Na <sub>2</sub> HPO <sub>4</sub> State: Aff - Purified State: Liquid Ig fraction
Reconstitution Method:	1.2% sodium acetate or neutral PBS. If 0.5ml of PBS is used, the antibody concentration will be 100µg/ml.
Purification:	Immunogen affinity purified
Conjugation:	Unconjugated
Storage:	Store at 2 - 8 °C for up to one month or (in aliquots) at -20 °C for longer. Avoid repeated freezing and thawing.
Stability:	Shelf life: one year from despatch.
Gene Name:	TIMP metalloproteinase inhibitor 2
Database Link:	<a href="#">Entrez Gene 21858 Mouse</a> <a href="#">Entrez Gene 29543 Rat</a> <a href="#">Entrez Gene 7077 Human P16035</a>
Background:	TIMP2 gen is encoded by 5 exons spanning 83 kb of genomic DNA. TIMP2 is 83 kilobase pairs (kb) long with exon-intron splicing sites located in preserved positions among the three members of the TIMP family. The gene for tissue inhibitor of metalloproteinases-2 is localized on human chromosome arm 17q25. TIMP-2 abrogates angiogenic factor-induced endothelial cell proliferation in vitro and angiogenesis in vivo independent of MMP inhibition.
Synonyms:	CSC-21K, TIMP-2



[View online »](#)

Protein Families: Druggable Genome, Secreted Protein

### Product images:



Western blot analysis of rat kidney lysis using TIMP2 antibody