

Product datasheet for **AP23357PU-N**

TIMP3 (C-term) Rabbit Polyclonal Antibody

Product data:

Product Type:	Primary Antibodies
Applications:	WB
Recommended Dilution:	Western blot: At 1-2µg/ml with the appropriate system to detect TIMP-3 in cells and tissues.
Reactivity:	Human, Mouse, Rat
Host:	Rabbit
Isotype:	IgG
Clonality:	Polyclonal
Immunogen:	A peptide mapping at the C-terminal end of TIMP-3 of human origin
Specificity:	This antibody detects TIMP3 (C-term). No cross reactivity with other proteins.
Formulation:	5mg BSA, 0.9mg NaCl, 0.2mg Na ₂ HPO ₄ , 0.05mg Thimerosal, 0.05mg NaN ₃ State: Aff - Purified State: Lyophilized Ig fraction
Reconstitution Method:	0.2ml of distilled water will yield a concentration of 500µg/ml.
Purification:	Immunogen affinity purified
Conjugation:	Unconjugated
Storage:	Store at 2 - 8 °C for up to one month or (in aliquots) at -20 °C for longer. Avoid repeated freezing and thawing.
Stability:	Shelf life: one year from despatch.
Gene Name:	TIMP metalloproteinase inhibitor 3
Database Link:	Entrez Gene 21859 Mouse Entrez Gene 25358 Rat Entrez Gene 7078 Human P35625
Background:	The tissue inhibitors of metalloproteinases (TIMPs) are natural inhibitors of the matrix metalloproteinases, a group of zinc-binding endopeptidases involved in the degradation of the extracellular matrix. The TIMP3 gene is expressed in many tissues, with highest expression in the placenta. TIMP3 encodes a potent angiogenesis inhibitor and is mutated in Sorsby fundus dystrophy, a macular degenerative disease with submacular choroidal neovascularization. TIMP3 gene is mapped to 22q12.1-q13.2. Mutations in TIMP3 cause the autosomal dominant disorder Sorsby's fundus dystrophy (SFD).

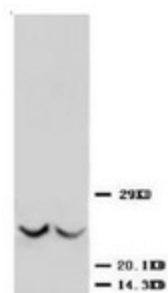


[View online »](#)

Synonyms: Protein MIG-5, TIMP-3

Protein Families: Druggable Genome, Secreted Protein

Product images:



Western blot analysis of rat kidney tissue lysis using TIMP3 antibody