

## Product datasheet for **AP23355PU-N**

### **TNFAIP1 (N-term) Rabbit Polyclonal Antibody**

#### **Product data:**

Product Type:	Primary Antibodies
Applications:	IF, IHC, WB
Recommended Dilution:	<b>Western blot:</b> 0.1-5 µg/ml with the appropriate system to detect TNFAIP1 in cells and tissues. <b>Immunohistochemistry on Frozen Sections:</b> 0.5-1 µg/ml. <b>Immunohistochemistry on Paraffin Sections:</b> 0.5-1 µg/ml to detect TNFAIP1 in formalin fixed and paraffin embedded tissues. <b>Immunocytochemistry:</b> 0.5-1 µg/ml.
Reactivity:	Human, Mouse, Rat
Host:	Rabbit
Isotype:	IgG
Clonality:	Polyclonal
Immunogen:	A synthetic peptide corresponding to a sequence at the N-terminal of Human TNFAIP1.
Specificity:	Recognizes TNFAIP1.
Formulation:	5 mg BSA, 0.9 mg NaCl, 0.2 mg Na <sub>2</sub> HPO <sub>4</sub> , 0.05 mg Thimerosal and 0.05 mg Sodium Azide State: Aff - Purified State: Lyophilized purified Ig fraction
Reconstitution Method:	Restore with 0.2 ml of distilled water to yield a concentration of 0.5 mg/ml.
Purification:	Immunoaffinity Chromatography
Conjugation:	Unconjugated
Storage:	Store lyophilized at 2-8°C for 6 months or at -20°C long term. After reconstitution store the antibody undiluted at 2-8°C for one month or (in aliquots) at -20°C long term. Avoid repeated freezing and thawing.
Stability:	Shelf life: one year from despatch.
Gene Name:	TNF alpha induced protein 1
Database Link:	<u><a href="#">Entrez Gene 21927 Mouse</a></u> <u><a href="#">Entrez Gene 287543 Rat</a></u> <u><a href="#">Entrez Gene 7126 Human Q13829</a></u>



[View online »](#)

**Background:**

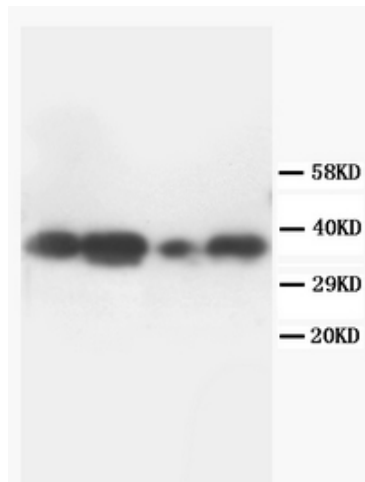
Tumor necrosis factor, alpha-induced protein 1 (endothelial), also known as TNFAIP1, is a human gene. The gene, present in single copy, was located in the 17q22-q23 region. This gene was identified as a gene whose expression can be induced by the tumor necrosis factor alpha (TNF) in umbilical vein endothelial cells. Studies of a similar gene in mouse suggest that the expression of this gene is developmentally regulated in a tissue-specific manner. The protein is involved in the primary response of the endothelium to TNF.

**Synonyms:**

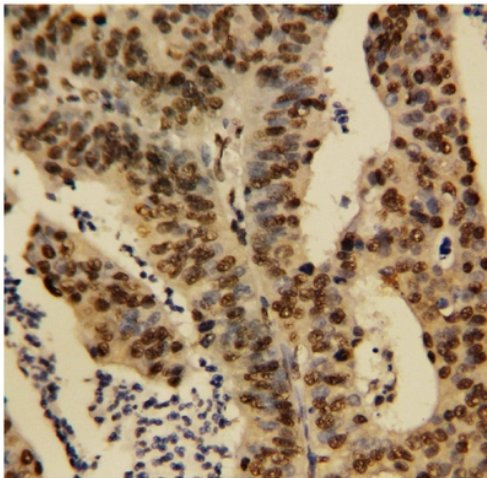
B12; B61; EDP1; MGC2317

**Protein Families:**

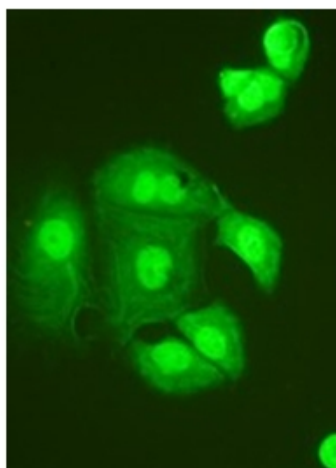
Druggable Genome, Ion Channels: Other

**Product images:**


Lane 1: Rat Brain tissue lysate. Lane 2: Rat Thymus tissue lysate. Lane 3: Rat Heart tissue lysate. Lane 4: Rat Lung tissue lysate.



Immunohistochemical staining of Human rectal cancer



Immunocytochemistry on HeLa Cell