

Product datasheet for **AP23348PU-N**

MMP8 (N-term) Rabbit Polyclonal Antibody

Product data:

Product Type:	Primary Antibodies
Applications:	IHC, WB
Recommended Dilution:	Western blot: 0.75 µg/ml. Immunohistochemistry on paraffin sections: 1-2 µg/ml.
Reactivity:	Human, Mouse, Rat
Host:	Rabbit
Isotype:	IgG
Clonality:	Polyclonal
Immunogen:	A synthetic peptide corresponding to a sequence at the N-terminal of human MMP8
Specificity:	This antibody detects MMP-8. No cross reactivity with other proteins.
Formulation:	5mg BSA, 0.9mg NaCl, 0.2mg Na ₂ HPO ₄ , 0.05mg Thimerosal, 0.05mg Na ₃ State: Aff - Purified State: Lyophilized Ig fraction
Reconstitution Method:	0.2ml of distilled water will yield a concentration of 500µg/ml.
Purification:	Immunogen affinity purified
Conjugation:	Unconjugated
Storage:	Store at 2 - 8 °C for up to one month or (in aliquots) at -20 °C for longer. Avoid repeated freezing and thawing.
Stability:	Shelf life: one year from despatch.
Gene Name:	matrix metalloproteinase 8
Database Link:	Entrez Gene 17394 Mouse Entrez Gene 63849 Rat Entrez Gene 4317 Human P22894



[View online »](#)

Background:

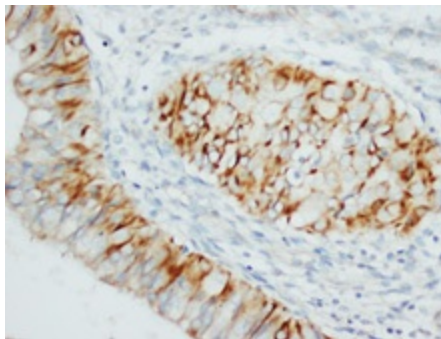
MMP8 (Matrix metalloproteinase 8) is a member of the family of matrix metalloproteinases. It is distinct from the collagenase of skin fibroblasts and synovial cells in substrate specificity and immunologic crossreactivity. MMP8 was mapped to 11q21-q22. MMP8 is an enzyme that degrades fibrillar collagens imparting strength to the fetal membranes, is expressed by leukocytes and chorionic cytotrophoblast cells. The enzyme exhibits 58% homology to human fibroblast collagenase and has the same domain structure. It consists of a 20-residue signal peptide, and an 80-residue propeptide that is lost on autolytic activation by cleavage of an M-L bond. MMP8 was found to possess 57% identity with the deduced protein sequence for fibroblast collagenase with 72% chemical similarity. Matrix metalloproteinases (MMPs) have fundamental roles in tumor progression, but most clinical trials with MMP inhibitors have not shown improvements in individuals with cancer. MMP8 has a paradoxical protective role in cancer and provides a genetic model to evaluate the molecular basis of gender differences in cancer susceptibility.

Synonyms:

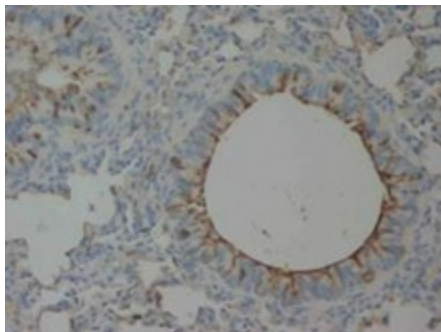
Neutrophil collagenase, Matrix metalloproteinase-8, PMNL collagenase, MMP8, CLG1, PMNL-CL

Protein Families:

Druggable Genome, Protease

Product images:


MMP8 Polyclonal Antibody



MMP8 Polyclonal Antibody