

Product datasheet for **AP23345PU-N**

Mrgprx1 (14-28) Rabbit Polyclonal Antibody

Product data:

Product Type:	Primary Antibodies
Applications:	IHC, WB
Recommended Dilution:	Western blot 0.75 µg/ml. Immunohistochemistry on paraffin sections 0.5-1 µg/ml.
Reactivity:	Rat
Host:	Rabbit
Isotype:	IgG
Clonality:	Polyclonal
Immunogen:	A synthetic peptide corresponding to a sequence at the N-terminal of rat MRGPCR (14-28 amino acid)
Specificity:	This antibody detects MRGPCR (14-28).
Formulation:	5mg BSA, 0.9mg NaCl, 0.2mg Na ₂ HPO ₄ , 0.05mg Thimerosal, 0.05mg NaN ₃ State: Aff - Purified State: Lyophilized Ig fraction
Reconstitution Method:	0.2ml of distilled water will yield a concentration of 500µg/ml.
Purification:	Immunogen affinity purified
Conjugation:	Unconjugated
Storage:	Store at 2 - 8 °C for up to one month or (in aliquots) at -20 °C for longer. Avoid repeated freezing and thawing.
Stability:	Shelf life: one year from despatch.
Gene Name:	MAS-related GPR, member X1
Database Link:	Entrez Gene 282547 Rat Q8R4G1



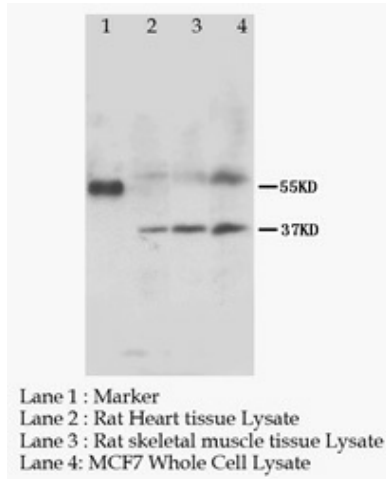
[View online »](#)

Background:

MAS-related G-protein coupled receptor, member C, also known as MRGPC or MRGPRX1, is a human gene. The Mas-related genes (Mrgs) comprise a family of >50 G protein-coupled receptors (GPCRs), many of which are expressed in specific subsets of nociceptive sensory neurons in mice. In contrast, humans contain a related but nonorthologous family of genes, called MrgXs or sensory neuron-specific receptors, of which many fewer appear to be expressed in sensory neurons.

Synonyms:

Mrgc, Mrgprx1, Mrgprc11, Snsr, Snsr1

Product images:


MRGPC SNSR Polyclonal Antibody