

Product datasheet for **AP23340PU-N**

XAF1 (C-term) Rabbit Polyclonal Antibody

Product data:

Product Type:	Primary Antibodies
Applications:	IHC, WB
Recommended Dilution:	Western blot 1 µg/ml. Immunohistochemistry on paraffin sections 0.5-1 µg/ml.
Reactivity:	Human, Mouse, Rat
Host:	Rabbit
Isotype:	IgG
Clonality:	Polyclonal
Immunogen:	A synthetic peptide corresponding to a sequence at the C-terminal of human XAF1
Specificity:	This antibody detects XAF1 (C-term). No cross reactivity with other proteins.
Formulation:	5mg BSA, 0.9mg NaCl, 0.2mg Na ₂ HPO ₄ , 0.05mg Thimerosal, 0.05mg Na ₃ N State: Aff - Purified State: Lyophilized Ig fraction
Reconstitution Method:	0.2ml of distilled water will yield a concentration of 500µg/ml.
Purification:	Immunogen affinity purified
Conjugation:	Unconjugated
Storage:	Store at 2 - 8 °C for up to one month or (in aliquots) at -20 °C for longer. Avoid repeated freezing and thawing.
Stability:	Shelf life: one year from despatch.
Gene Name:	XIAP associated factor 1
Database Link:	Entrez Gene 327959 Mouse Entrez Gene 54739 Human Q6GPH4



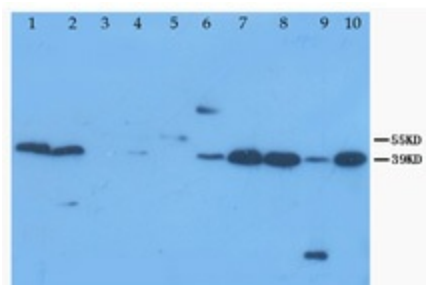
[View online »](#)

Background:

XIAP associated factor-1, also known as XAF1, is a human gene. X-linked inhibitor of apoptosis (XIAP;MIM 300079) is a potent member of the IAP family. All members of this family possess baculoviral IAP (BIR) repeats, cysteine-rich domains of approximately 80 amino acids that bind and inhibit caspases. XAF1 antagonizes the anticaspase activity of XIAP and may be important in mediating apoptosis resistance in cancer cells. And alteration in XAF1 and XIAP RNA expression levels may lead to increased apoptotic resistance and proliferation due to unregulated XIAP function in cancer cells.

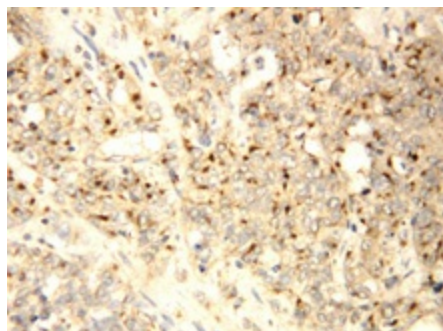
Synonyms:

XIAPAF1, BIRC4BP

Product images:


Lane 1 : Rat Live tissue Lysate
 Lane 2 : Rat Kidney tissue Lysate
 Lane 3 : Rat Spleen tissue Lysate
 Lane 4 : Human placenta tissue Lysate
 Lane 5 : Marker
 Lane 6 : MCF7 Whole Cell Lysate
 Lane 7 : HeLa Whole Cell Lysate
 Lane 8 : smmc cell lysate
 Lane 9 : HT1080 Whole Cell Lysate
 Lane 10 : colo320 Whole Cell Lysate

XAF1 Polyclonal Antibody



XAF1 Polyclonal Antibody