

Product datasheet for **AP23334PU-N**

Neurotrophin 3 (NTF3) Rabbit Polyclonal Antibody

Product data:

Product Type:	Primary Antibodies
Applications:	IHC, WB
Recommended Dilution:	Western blot: Use at 1-2 µg/ml with the appropriate system to detect NT-3 in cells and tissues. Immunohistochemistry on Paraffin Sections: Use at 0.5-1 µg/ml to detect NT-3 in formalin fixed and paraffin embedded tissues.
Reactivity:	Human, Mouse, Rat
Host:	Rabbit
Isotype:	IgG
Clonality:	Polyclonal
Immunogen:	Synthetic peptide mapping at the middle region of Human Neurotrophin-3
Specificity:	This antibody detects Neurotrophin 3 / NTF3 in the middle.
Formulation:	50% Glycerol, 0.9mg NaCl, 0.2mg Na ₂ HPO ₄ State: Aff - Purified State: Lyophilized purified Ig fraction
Reconstitution Method:	Restore with 1.2% Sodium Acetate or neutral PBS.
Concentration:	0.1 mg/ml (after reconstitution with 0.5 ml PBS)
Purification:	Immunoaffinity Chromatography
Conjugation:	Unconjugated
Storage:	Prior to reconstitution store at -20°C. Following reconstitution store undiluted at 2-8°C for 3 months or (in aliquots) at -20°C for longer. Avoid repeated freezing and thawing.
Stability:	Shelf life: one year from despatch.
Gene Name:	neurotrophin 3
Database Link:	Entrez Gene 18205 Mouse Entrez Gene 81737 Rat Entrez Gene 4908 Human P20783



[View online »](#)

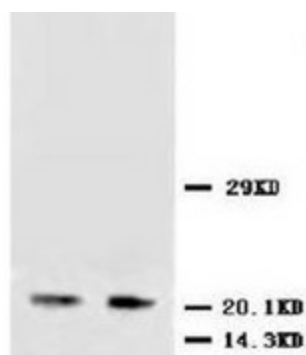
Background: Neurotrophin-3 is a member of a family of neurotrophic factors, that is closely related to both nerve growth factor and brain derived neurotrophic factor. These proteins are involved in the maintenance of the adult nervous system and affect development of neurons in the embryo when it is expressed in human placenta. NT3 deficient mice generated by gene targeting display severe movement defects of the limbs.

Synonyms: Neurotrophin-3, NT-3, Neurotrophic factor, HDNF, Nerve growth factor 2, NGF-2

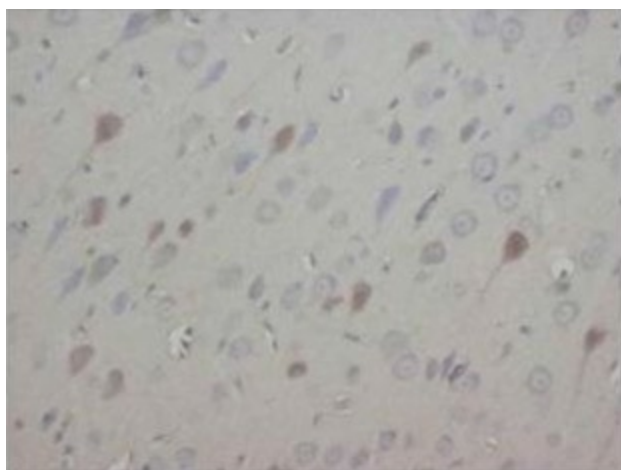
Protein Families: Druggable Genome, Secreted Protein

Protein Pathways: MAPK signaling pathway, Neurotrophin signaling pathway

Product images:



Western blot analysis of rat brain tissue lysis using NT3 antibody



Immunohistochemical analysis of paraffin embedded rat tissue sections (brain) using NT3 antibody