

Product datasheet for **AP23332PU-N**

IFITM1 (N-term) Rabbit Polyclonal Antibody

Product data:

| | |
|------------------------|--|
| Product Type: | Primary Antibodies |
| Applications: | IHC, WB |
| Recommended Dilution: | Western blot: At 1 µg/ml with the appropriate system to detect IFITM1 in cells and tissues. Immunohistochemistry on paraffin sections: At 0.5-1 µg/ml to detect IFITM1 in formalin fixed and paraffin embedded tissues. Immunohistochemistry on frozen sections. |
| Reactivity: | Human |
| Host: | Rabbit |
| Isotype: | IgG |
| Clonality: | Polyclonal |
| Immunogen: | Synthetic peptide corresponding to a sequence at the N-terminal of human IFITM1 |
| Specificity: | This antibody detects CD225 / IFITM1 (N-term). |
| Formulation: | 5mg BSA, 0.9mg NaCl, 0.2mg Na ₂ HPO ₄ , 0.05mg Thimerosal, 0.05mg Na ₃ State: Aff - Purified State: Lyophilized Ig fraction |
| Reconstitution Method: | 0.2ml of distilled water will yield a concentration of 500 µg/ml. |
| Purification: | Immunogen affinity purified |
| Conjugation: | Unconjugated |
| Storage: | Store at 2 - 8 °C for up to one month or (in aliquots) at -20 °C for longer. Avoid repeated freezing and thawing. |
| Stability: | Shelf life: one year from despatch. |
| Gene Name: | interferon induced transmembrane protein 1 |
| Database Link: | Entrez Gene 8519 Human P13164 |



[View online »](#)

Background:

Interferon-induced Transmembrane Protein 1 (IFITM1), also called Interferon-induced Protein 17 (IFI17). IFITM1 activity is required for primordial germ cells (PGCs) transit from the mesoderm into the endoderm, and that it appears to act via a repulsive mechanism, such that PGCs avoid Ifitm1-expressing tissues. It is mapped to Chr.11 and belongs to the family of interferon-induced transmembrane proteins (Ifitm/mil/fragilis), which encodes cell surface proteins that may modulate cell adhesion and influence cell differentiation. Interferon-inducible membrane proteins of approximately 17 kDa have been suggested to play a role in the antiproliferative activity of interferons based on their pattern of induction in interferon-sensitive and -resistant cell lines and the ability of a membrane fraction enriched in 17-kDa proteins to inhibit cell growth.

Synonyms:

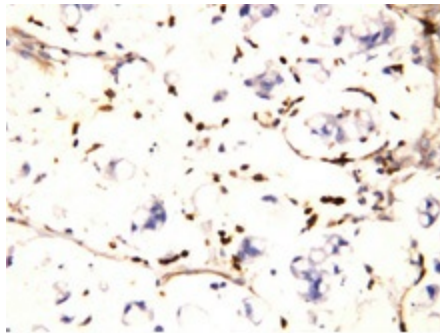
Leu-13 antigen, IFI17

Protein Families:

Druggable Genome, Transmembrane

Protein Pathways:

B cell receptor signaling pathway

Product images:

IFITM1 Polyclonal Antibody